

## Recombinant Human IL17RA protein, hFc-Avi-tagged, Biotinylated

**Cat. No.** IL17RA-299H    **Lot. No.** (See product label)

### SPECIFICATION

<b>Product Overview</b>	Biotinylated Recombinant Human IL17RA protein(Q96F46-1)(Leu33-Trp320), fused with C-terminal hFc and Avi tag, was expressed in HEK293.
<b>Species</b>	Human
<b>Source</b>	HEK293
<b>ProteinLength</b>	Leu33-Trp320
<b>Tag</b>	C-hFc-Avi
<b>Conjugation/Label</b>	Biotin
<b>Form</b>	Lyophilized from 0.22µm filtered solution in PBS (pH 7.4). Normally 5% trehalose is added as protectant before lyophilization.
<b>Bio-activity</b>	Immobilized Human IL-17A&F, His Tag at 1ug/ml (100ul/well) on the plate. Dose response curve for Biotinylated Human IL-17R alpha, hFc Tag with the EC50 of 0.94ug/ml determined by ELISA.
<b>Molecular Mass</b>	The protein has a predicted MW of 61.8 kDa. Due to glycosylation, the protein migrates to 78-100 kDa based on Tris-Bis PAGE result.
<b>Endotoxin</b>	Less than 1EU per µg by the LAL method.

 Tel: 1-631-559-9269    1-516-512-3133

 Email: [info@creative-biomart.com](mailto:info@creative-biomart.com)     Fax: 1-631-938-8127

 45-1 Ramsey Road, Shirley, NY 11967, USA

<b>Purity</b>	> 95% as determined by Tris-Bis PAGE;> 95% as determined by HPLC
<b>Storage</b>	Reconstituted protein stable at -80°C for 12 months, 4°C for 1 week. Use a manual defrost freezer and avoid repeated freeze-thaw cycles.
<b>Reconstitution</b>	Centrifuge tubes before opening. Reconstituting to a concentration more than 100 µg/ml is recommended. Dissolve the lyophilized protein in distilled water.
<b>Conjugation</b>	Biotin

## GENE INFORMATION

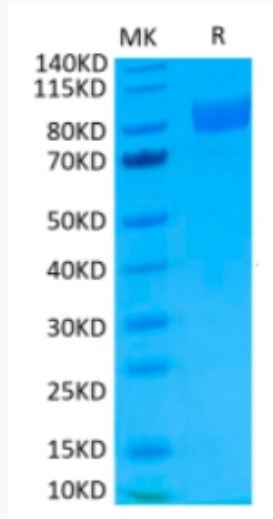
<b>Gene Name</b>	<a href="#">IL17RA interleukin 17 receptor A [ Homo sapiens ]</a>
<b>Official Symbol</b>	<a href="#">IL17RA</a>
<b>Synonyms</b>	IL17RA; interleukin 17 receptor A; IL17R, interleukin 17 receptor; interleukin-17 receptor A; CD217; CDw217; hIL 17R; IL 17RA; IL-17 receptor A; IL17R; CANDF5; IL-17RA; hIL-17R; FLJ32274; FLJ36453; MGC10262;
<b>Gene ID</b>	<a href="#">23765</a>
<b>mRNA Refseq</b>	<a href="#">NM_014339</a>
<b>Protein Refseq</b>	<a href="#">NP_055154</a>
<b>MIM</b>	<a href="#">605461</a>
<b>UniProt ID</b>	<a href="#">Q96F46</a>

 Tel: 1-631-559-9269 1-516-512-3133

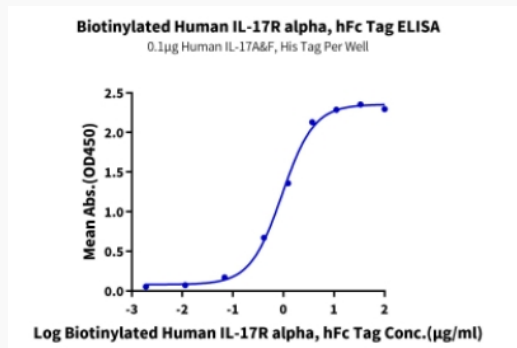
 Email: [info@creative-biomart.com](mailto:info@creative-biomart.com)  Fax: 1-631-938-8127

 45-1 Ramsey Road, Shirley, NY 11967, USA

**Tris-Bis PAGE**



**ELISA Data**



 Tel: 1-631-559-9269 1-516-512-3133

 Email: [info@creative-biomart.com](mailto:info@creative-biomart.com)  Fax: 1-631-938-8127

 45-1 Ramsey Road, Shirley, NY 11967, USA