

Recombinant Human IL17RB protein, His-tagged

Cat. No. IL17RB-4533H Lot. No. (See product label)

SPECIFICATION

Product Overview	Recombinant Human IL17RB protein(Q9NRM6-1)(Arg18-Per292), fused with C-terminal His tag, was expressed in HEK293.
Species	Human
Source	HEK293
ProteinLength	Arg18-Per292
Tag	C-His
Form	Lyophilized from 0.22µm filtered solution in PBS (pH 7.4). Normally 5% trehalose is added as protectant before lyophilization.
Bio-activity	Immobilized Human IL-17RB, His Tag at 0.2ug/ml (100ul/well) on the plate. Dose response curve for Anti-IL-17RB Antibody, hFc Tag with the EC50 of 5.4ng/ml determined by ELISA (QC Test).
Molecular Mass	The protein has a predicted MW of 31.4 kDa. Due to glycosylation, the protein migrates to 45-60 kDa based on Tris-Bis PAGE result.
Endotoxin	Less than 1EU per µg by the LAL method.
Purity	> 95% as determined by Tris-Bis PAGE;> 95% as determined by HPLC

 Tel: 1-631-559-9269 1-516-512-3133

 Email: info@creative-biomart.com  Fax: 1-631-938-8127

 45-1 Ramsey Road, Shirley, NY 11967, USA

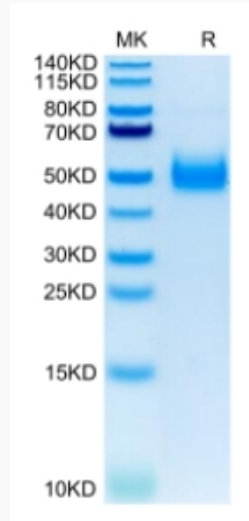
Storage	Reconstituted protein stable at -80°C for 12 months, 4°C for 1 week. Use a manual defrost freezer and avoid repeated freeze-thaw cycles.
Reconstitution	Centrifuge tubes before opening. Reconstituting to a concentration more than 100 µg/ml is recommended. Dissolve the lyophilized protein in distilled water.
GENE INFORMATION	
Gene Name	IL17RB interleukin 17 receptor B [Homo sapiens]
Official Symbol	IL17RB
Synonyms	IL17RB; interleukin 17 receptor B; IL17BR, interleukin 17B receptor; interleukin-17 receptor B; CRL4; EVI27; IL17RH1; IL-17RB; IL-17Rh1; IL-17B receptor; IL-17 receptor B; cytokine receptor CRL4; IL-17 receptor homolog 1; cytokine receptor-like 4; interleukin 17B receptor; interleukin-17B receptor; interleukin 17 receptor homolog 1; IL17BR; MGC5245;
Gene ID	55540
mRNA Refseq	NM_018725
Protein Refseq	NP_061195
MIM	605458
UniProt ID	Q9NRM6

 Tel: 1-631-559-9269 1-516-512-3133

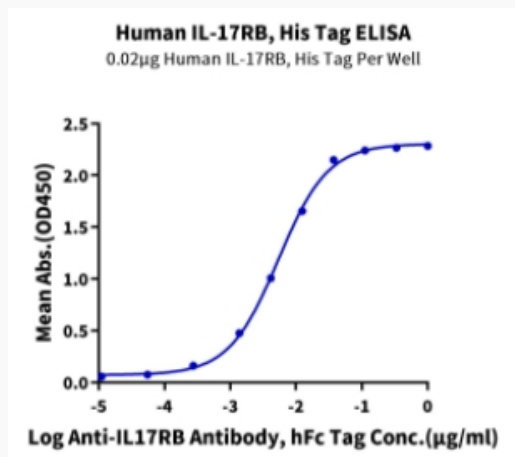
 Email: info@creative-biomart.com  Fax: 1-631-938-8127

 45-1 Ramsey Road, Shirley, NY 11967, USA

Tris-Bis PAGE



ELISA Data



 Tel: 1-631-559-9269 1-516-512-3133

 Email: info@creative-biomart.com  Fax: 1-631-938-8127

 45-1 Ramsey Road, Shirley, NY 11967, USA