

## Recombinant Canine IL18 Protein, His tagged

Cat. No. IL18-03C Lot. No. (See product label)

### SPECIFICATION

<b>Product Overview</b>	Recombinant Canine IL18 Protein, Sourced from E.coli, Tyr37-Ser181, with N-terminal His Tag.
<b>Species</b>	Canine
<b>Source</b>	E.coli
<b>ProteinLength</b>	37-181 aa
<b>Description</b>	Interleukin- 18 (IL-18) is a pro-inflammatory cytokine that plays a role in a variety of autoimmune and inflammatory diseases. Produced by many different cell types including monocytes, macrophages, keratinocytes, and mesenchymal cells IL-18 plays a role in arthritis, psoriasis and other autoinflammatory conditions.
<b>Form</b>	Lyophilized from 1x PBS with Trehalose
<b>Molecular Mass</b>	20 kDa
<b>Purity</b>	>99% by SDS-PAGE
<b>Applications</b>	ELISA and Western Blot Analysis
<b>Storage</b>	2 years at -80 centigrade; 2 years at -20 or 4 centigrade Upon reconstitution: 2 years at -80 centigrade; 2 years at -20 centigrade For long-term storage, store for up to 2 years at -20 centigrade & -80 centigrade after reconstitution. Expiration is 2 years

 Tel: 1-631-559-9269 1-516-512-3133

 Email: [info@creative-biomart.com](mailto:info@creative-biomart.com)  Fax: 1-631-938-8127

 45-1 Ramsey Road, Shirley, NY 11967, USA

from date of receipt.

**Shipping**

Ambient

**Reconstitution**

Reconstitute at 10 µg/mL in sterile PBS containing at least 0.1% protein.

## GENE INFORMATION

**Gene Name**

IL18 interleukin 18 (interferon-gamma-inducing factor) [ *Canis lupus familiaris* (dog) ]

**Official Symbol**

IL18

**Synonyms**

IL18; interleukin 18 (interferon-gamma-inducing factor); interleukin-18; IL-18; IL-1 gamma; interleukin-1 gamma; IFN-gamma-inducing factor; interferon gamma inducing factor; interferon gamma-inducing factor; interferon-gamma-inducing factor; IGIF

**Gene ID**

403796

**mRNA Refseq**

NM\_001003169

**Protein Refseq**

NP\_001003169

**UniProt ID**

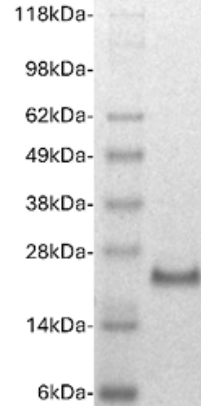
Q95LE7

 Tel: 1-631-559-9269 1-516-512-3133

 Email: [info@creative-biomart.com](mailto:info@creative-biomart.com)  Fax: 1-631-938-8127

 45-1 Ramsey Road, Shirley, NY 11967, USA

**SDS-PAGE**



Canine IL-18 (2 $\mu$ g) on a Coomassie stained 4-12% SDS-PAGE gel, reducing conditions.

 Tel: 1-631-559-9269 1-516-512-3133

 Email: [info@creative-biomart.com](mailto:info@creative-biomart.com)  Fax: 1-631-938-8127

 45-1 Ramsey Road, Shirley, NY 11967, USA