

Recombinant Human interleukin 18 Protein, His tagged

Cat. No. IL18-113H Lot. No. (See product label)

SPECIFICATION

Product Overview	Recombinant human IL-18 BPa protein (O95998-2) (Thr 31-Gly 194) with a His tag at the C-terminus was expressed in HEK293.
Species	Human
Source	HEK293
ProteinLength	31-194aa
Description	The protein encoded by this gene functions as an inhibitor of the proinflammatory cytokine, IL18. It binds IL18, prevents the binding of IL18 to its receptor, and thus inhibits IL18-induced IFN-gamma production, resulting in reduced T-helper type 1 immune responses. This protein is constitutively expressed and secreted in mononuclear cells. Elevated level of this protein is detected in the intestinal tissues of patients with Crohn's disease. Alternatively spliced transcript variants encoding different isoforms have been described for this gene. Isoform A binds to IL-18 and inhibits its activity. Functions as an inhibitor of the early TH1 cytokine response.
Tag	C-His
Molecular Mass	19 kDa
Endotoxin	Less than 1.0 EU/μg by the LAL method.
Purity	>95% as determined by SDS-PAGE.

 Tel: 1-631-559-9269 1-516-512-3133

 Email: info@creative-biomart.com  Fax: 1-631-938-8127

 45-1 Ramsey Road, Shirley, NY 11967, USA

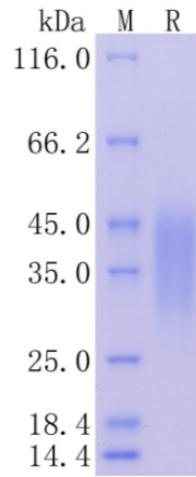
Storage	Please avoid repeated freeze-thaw cycles. Samples are stable for up to twelve months from date of receipt at -20 to -80 centigrade. It is recommended that aliquot the reconstituted solution to minimize freeze-thaw cycles.
Storage Buffer	Lyophilized from a 0.2 µm filtered solution of PBS, pH7.4, 5% Trehalose, 5% mannitol.
Reconstitution	Reconstitute at 250 µg/mL in sterile water.
GENE INFORMATION	
Gene Name	IL18 interleukin 18 [Homo sapiens (human)]
Official Symbol	IL18
Synonyms	IL18; interleukin 18 (interferon-gamma-inducing factor); interleukin-18; IGIF; IL 1g; IL 18; IL1F4; IL-1 gamma; iboctadekin; interleukin-1 gamma; IFN-gamma-inducing factor; IL-18; IL-1g; MGC12320;
Gene ID	3606
mRNA Refseq	NM_001243211
Protein Refseq	NP_001230140
MIM	600953
UniProt ID	O95998


 Tel: 1-631-559-9269 1-516-512-3133

 Email: info@creative-biomart.com  Fax: 1-631-938-8127


 45-1 Ramsey Road, Shirley, NY 11967, USA

**Protein on SDS-
PAGE under
reducing (R)
condition.**



 Tel: 1-631-559-9269 1-516-512-3133

 Email: info@creative-biomart.com  Fax: 1-631-938-8127

 45-1 Ramsey Road, Shirley, NY 11967, USA