

## Recombinant Human IL18 protein

Cat. No. IL18-186H Lot. No. (See product label)

### SPECIFICATION

<b>Product Overview</b>	Recombinant Human IL18 protein(Q14116)(Tyr37-Asp193) was expressed in E.coli.
<b>Species</b>	Human
<b>Source</b>	E.coli
<b>ProteinLength</b>	Tyr37-Asp193
<b>Tag</b>	Non
<b>Form</b>	Lyophilized from 0.22µm filtered solution in PBS (pH 7.4). Normally 5% trehalose is added as protectant before lyophilization.
<b>Bio-activity</b>	Immobilized Human IL-18 at 5ug/ml (100ul/Well) on the plate. Dose response curve for Human IL-18BP, hFc Tag with the EC50 of 16.9ng/ml determined by ELISA.
<b>Molecular Mass</b>	The protein has a predicted MW of 18.2 kDa same as Tris-Bis PAGE result.
<b>Endotoxin</b>	Less than 1EU per µg by the LAL method.
<b>Purity</b>	> 95% as determined by Tris-Bis PAGE;> 95% as determined by HPLC
<b>Storage</b>	Reconstituted protein stable at -80°C for 12 months, 4°C for 1 week. Use a manual defrost freezer and avoid repeated freeze-thaw cycles.

 Tel: 1-631-559-9269 1-516-512-3133

 Email: [info@creative-biomart.com](mailto:info@creative-biomart.com)  Fax: 1-631-938-8127

 45-1 Ramsey Road, Shirley, NY 11967, USA

**Reconstitution** Centrifuge tubes before opening. Reconstituting to a concentration more than 100 µg/ml is recommended. Dissolve the lyophilized protein in distilled water.

## GENE INFORMATION

**Gene Name** IL18 interleukin 18 (interferon-gamma-inducing factor) [ Homo sapiens ]

**Official Symbol** IL18

**Synonyms** IL18; interleukin 18 (interferon-gamma-inducing factor); interleukin-18; IGIF; IL 1g; IL 18; IL1F4; IL-1 gamma; iboctadekin; interleukin-1 gamma; IFN-gamma-inducing factor; IL-18; IL-1g; MGC12320;

**Gene ID** 3606

**mRNA Refseq** NM\_001243211

**Protein Refseq** NP\_001230140

**MIM** 600953

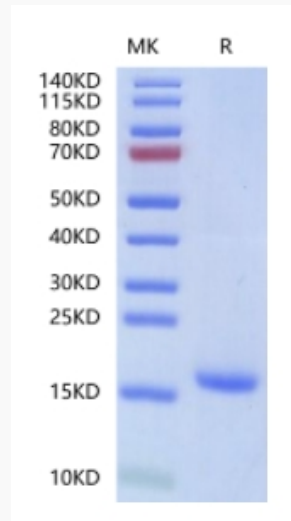
**UniProt ID** Q14116

 Tel: 1-631-559-9269 1-516-512-3133

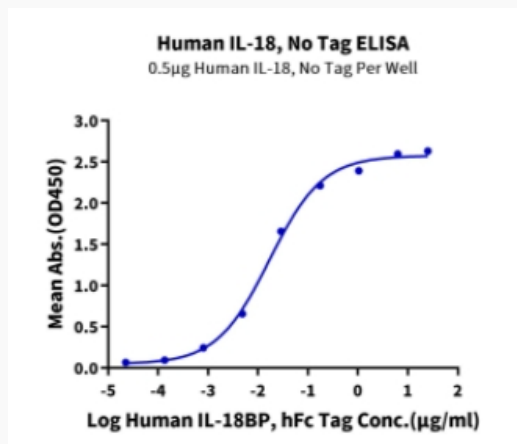
 Email: [info@creative-biomart.com](mailto:info@creative-biomart.com)  Fax: 1-631-938-8127

 45-1 Ramsey Road, Shirley, NY 11967, USA

**Tris-Bis PAGE**



**ELISA Data**



 Tel: 1-631-559-9269 1-516-512-3133

 Email: [info@creative-biomart.com](mailto:info@creative-biomart.com)  Fax: 1-631-938-8127

 45-1 Ramsey Road, Shirley, NY 11967, USA