

Recombinant Human IL18 Protein, Myc/DDK-tagged, C13 and N15-labeled

Cat. No. IL18-3886H **Lot. No.** (See product label)

SPECIFICATION

Product Overview	IL18 MS Standard C13 and N15-labeled recombinant protein (NP_001553) with a C-terminal MYC/DDK tag, was expressed in HEK293 cells.
Species	Human
Source	HEK293
Description	The protein encoded by this gene is a proinflammatory cytokine that augments natural killer cell activity in spleen cells, and stimulates interferon gamma production in T-helper type I cells. Alternatively spliced transcript variants encoding different isoforms have been found for this gene.
Molecular Mass	22.3 kDa
AA Sequence	MAAEPVEDNCINFVAMKFIDNTLYFIAEDDENLESDYFGKLESKLSVIRNLNDQVLFID QGNRPLFEDMTDSDCRDNAPRTIFIISMYKDSQPRGMAVTISVKCEKISTLSCENKIIS FKEMNPPDNIKDTKSDIIFQRSVPGHDNKMQFESSYEGYFLACEKERDLFKLILKK EDELGDRSIMFTVQNEPTRTRPLEQKLISEEDLAANDILDYKDDDDKV
Purity	> 80% as determined by SDS-PAGE and Coomassie blue staining
Stability	Stable for 3 months from receipt of products under proper storage and handling conditions.

 Tel: 1-631-559-9269 1-516-512-3133

 Email: info@creative-biomart.com  Fax: 1-631-938-8127

 45-1 Ramsey Road, Shirley, NY 11967, USA

Storage	Store at -80 centigrade. Avoid repeated freeze-thaw cycles.
Concentration	50 µg/mL as determined by BCA
Storage Buffer	100 mM glycine, 25 mM Tris-HCl, pH 7.3.
GENE INFORMATION	
Gene Name	IL18 interleukin 18 [Homo sapiens (human)]
Official Symbol	IL18
Synonyms	IL18; interleukin 18 (interferon-gamma-inducing factor); interleukin-18; IGIF; IL 1g; IL 18; IL1F4; IL-1 gamma; iboctadekin; interleukin-1 gamma; IFN-gamma-inducing factor; IL-18; IL-1g; MGC12320;
Gene ID	3606
mRNA Refseq	NM_001562
Protein Refseq	NP_001553
MIM	600953
UniProt ID	Q14116

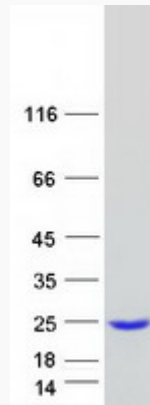
 Tel: 1-631-559-9269 1-516-512-3133

 Email: info@creative-biomart.com  Fax: 1-631-938-8127

 45-1 Ramsey Road, Shirley, NY 11967, USA



SDS-PAGE



Tel: 1-631-559-9269 1-516-512-3133

Email: info@creative-biomart.com Fax: 1-631-938-8127

45-1 Ramsey Road, Shirley, NY 11967, USA