

## Recombinant Human IL18 protein, His-Avi-tagged

**Cat. No.** IL18-504H    **Lot. No.** (See product label)

### SPECIFICATION

<b>Product Overview</b>	Recombinant Human IL17A Protein is expressed from mammalian with a His and Avi Tag at the C-terminal. It contains Gly 24 - Ala 155.
<b>Species</b>	Human
<b>Source</b>	HEK293
<b>ProteinLength</b>	It contains Gly 24 - Ala 155.
<b>Description</b>	Interleukin-17A (IL-17A), also known as CTLA-8, is a 15-20 kDa glycosylated cytokine that plays an important role in anti-microbial and chronic inflammation. The six IL-17 cytokines (IL-17A-F) are encoded by separate genes but adopt a conserved cystine knot fold .IL-17A is a ligand for IL17RA and IL17RC. The heterodimer formed by IL17A and IL17F is a ligand for the heterodimeric complex formed by IL17RA and IL17RC . Involved in inducing stromal cells to produce proinflammatory and hematopoietic cytokines.
<b>Form</b>	Supplied as 0.22um filtered solution in PBS (pH 7.4).
<b>Molecular Mass</b>	The protein has a predicted MW of 18.2 kDa.Due to glycosylation, the protein migrates to 16-30 KDa based on Bis-Tris PAGE result.
<b>Endotoxin</b>	Less than 0.05EU per ug by the LAL method.

 Tel: 1-631-559-9269    1-516-512-3133

 Email: [info@creative-biomart.com](mailto:info@creative-biomart.com)     Fax: 1-631-938-8127

 45-1 Ramsey Road, Shirley, NY 11967, USA

<b>Purity</b>	> 95% as determined by Bis-Tris PAGE
<b>Storage</b>	The product should be stored at -70°C. Please do not repeated freeze-thaw cycles.
<b>Reconstitution</b>	It is recommended that sterile water be added to the vial to prepare a stock solution of 0.2 ug/ul. Centrifuge the vial at 4°C before opening to recover the entire contents.

## GENE INFORMATION

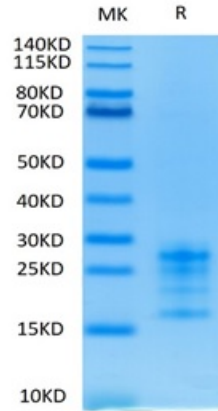
<b>Gene Name</b>	IL18 interleukin 18 (interferon-gamma-inducing factor) [ Homo sapiens ]
<b>Official Symbol</b>	IL18
<b>Synonyms</b>	CTLA-8; CTLA8cytotoxic T-lymphocyte-associated serine esterase 8; Cytotoxic T-lymphocyte-associated antigen 8; IL17; IL-17; IL17A; IL-17A; IL-17Acytotoxic T-lymphocyte-associated protein 8; IL-17CTLA-8; IL17interleukin-17A; interleukin 17 (cytotoxic T-lymphocyte-associated serine esterase 8); interleukin 17A
<b>Gene ID</b>	3606
<b>mRNA Refseq</b>	NM_001243211
<b>Protein Refseq</b>	NP_001230140
<b>MIM</b>	600953
<b>UniProt ID</b>	Q14116

 Tel: 1-631-559-9269 1-516-512-3133

 Email: [info@creative-biomart.com](mailto:info@creative-biomart.com)  Fax: 1-631-938-8127

 45-1 Ramsey Road, Shirley, NY 11967, USA

**Tris-Bis PAGE**



 Tel: 1-631-559-9269 1-516-512-3133

 Email: [info@creative-biomart.com](mailto:info@creative-biomart.com)  Fax: 1-631-938-8127

 45-1 Ramsey Road, Shirley, NY 11967, USA