

Recombinant Human IL18BP protein, His-tagged

Cat. No. IL18BP-3165H Lot. No. (See product label)

SPECIFICATION

Product Overview	Recombinant Human IL18BP protein(O95998-2)(Thr31-Gly194), fused with C-terminal His tag, was expressed in HEK293.
Species	Human
Source	HEK293
ProteinLength	Thr31-Gly194
Tag	C-His
Form	Lyophilized from 0.22µm filtered solution in PBS (pH 7.4). Normally 5% trehalose is added as protectant before lyophilization.
Bio-activity	Human IL-18BP, His Tag captured on CM5 Chip via Anti-his antibody can bind Human IL-18, No Tag with an affinity constant of 0.41 nM as determined in SPR assay (Biacore T200).
Molecular Mass	The protein has a predicted MW of 18.7 kDa. Due to glycosylation, the protein migrates to 40-60 kDa based on Tris-Bis PAGE result.
Endotoxin	Less than 1EU per µg by the LAL method.
Purity	> 95% as determined by Tris-Bis PAGE;> 95% as determined by HPLC

 Tel: 1-631-559-9269 1-516-512-3133

 Email: info@creative-biomart.com  Fax: 1-631-938-8127

 45-1 Ramsey Road, Shirley, NY 11967, USA

Storage Reconstituted protein stable at -80°C for 12 months, 4°C for 1 week. Use a manual defrost freezer and avoid repeated freeze-thaw cycles.

Reconstitution Centrifuge tubes before opening. Reconstituting to a concentration more than 100 µg/ml is recommended. Dissolve the lyophilized protein in distilled water.

GENE INFORMATION

Gene Name IL18BP interleukin 18 binding protein [Homo sapiens]

Official Symbol IL18BP

Synonyms IL18BP; interleukin 18 binding protein; interleukin-18-binding protein; IL18BPα; MC51L 53L 54L homolog gene product; IL-18BP; tadekinig-alfa; MC51L-53L-54L homolog gene product;

Gene ID 10068

mRNA Refseq NM_001039659

Protein Refseq NP_001034748

MIM 604113

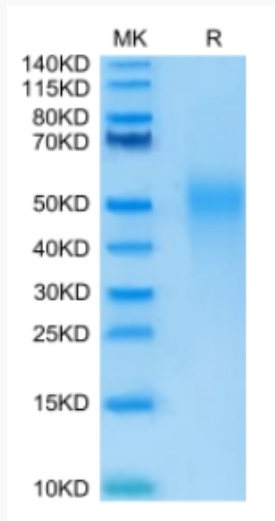
UniProt ID O95998

 Tel: 1-631-559-9269 1-516-512-3133

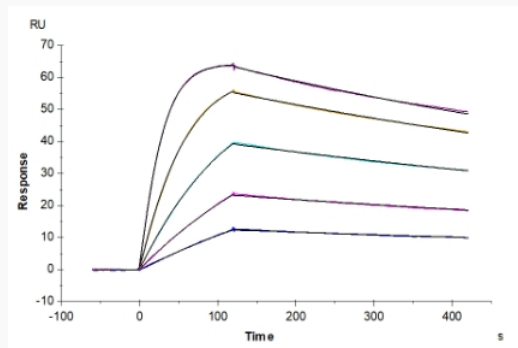
 Email: info@creative-biomart.com  Fax: 1-631-938-8127

 45-1 Ramsey Road, Shirley, NY 11967, USA

Tris-Bis PAGE



SPR Data



Tel: 1-631-559-9269 1-516-512-3133

Email: info@creative-biomart.com Fax: 1-631-938-8127

45-1 Ramsey Road, Shirley, NY 11967, USA