

Recombinant Human IL18R1 protein, His-tagged

Cat. No. IL18R1-1749H Lot. No. (See product label)

SPECIFICATION

Product Overview	Recombinant Human IL18R1 aa. (Tyr375~Glu428 (Accession # Q13478)) fused with N-terminal His tag was produced in E. coli cells.
Species	Human
Source	E.coli
ProteinLength	Tyr375~Glu428
Form	Freeze-dried powder
Molecular Mass	Predicted Molecular Mass: 7.7kDa
Endotoxin	<1.0EU per 1ug (determined by the LAL method)
Purity	>95%
Characteristic	The isoelectric point is 5.7.
Applications	SDS-PAGE; WB; ELISA; IP.
Stability	The thermal stability is described by the loss rate of the target protein. The loss rate was determined by accelerated thermal degradation test, that is, incubate the protein at 37°C for 48h, and no obvious degradation and precipitation were observed. (Referring from China Biological Products Standard, which was calculated by the

 Tel: 1-631-559-9269 1-516-512-3133

 Email: info@creative-biomart.com  Fax: 1-631-938-8127

 45-1 Ramsey Road, Shirley, NY 11967, USA

Arrhenius equation.) The loss of this protein is less than 5% within the expiration date under appropriate storage condition.

Storage

Avoid repeated freeze/thaw cycles. Store at 2-8°C for one month. Aliquot and store at -80°C for 12 months.

Storage buffer

Supplied as lyophilized form in PBS, pH7.4, containing 5% sucrose, 0.01% sarcosyl.

Reconstitution

Reconstitute in sterile PBS, pH7.2-pH7.4.

GENE INFORMATION

Gene Name

IL18R1 interleukin 18 receptor 1 [Homo sapiens (human)]

Official Symbol

IL18R1

Synonyms

IL18R1; interleukin 18 receptor 1; CD218a; IL18RA; IL1RRP; CDw218a; IL-1Rrp; interleukin-18 receptor 1; CD218 antigen-like family member A; IL-18R-1; IL-18R1; IL1 receptor-related protein; IL18Ralpha2; IL1R-rp; cytokine receptor

Gene ID

8809

mRNA Refseq

NM_001282399.1

Protein Refseq

NP_001269328.1

UniProt ID

Q13478

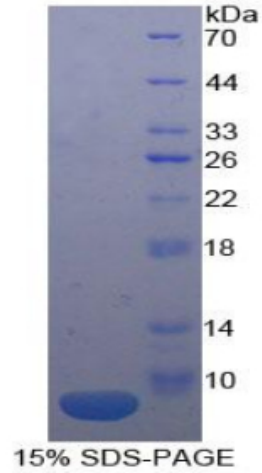
 Tel: 1-631-559-9269 1-516-512-3133

 Email: info@creative-biomart.com  Fax: 1-631-938-8127

 45-1 Ramsey Road, Shirley, NY 11967, USA



SDS-PAGE



Tel: 1-631-559-9269 1-516-512-3133

Email: info@creative-biomart.com Fax: 1-631-938-8127

45-1 Ramsey Road, Shirley, NY 11967, USA