

## Recombinant Human IL18R1 protein, His-tagged

Cat. No. IL18R1-2253H Lot. No. (See product label)

### SPECIFICATION

<b>Product Overview</b>	Recombinant Human IL18R1 protein(NP_003846.1) (Met 1-Arg 329) was expressed in HEK293, fused with a polyhistidine tag at the C-terminus.
<b>Species</b>	Human
<b>Source</b>	HEK293
<b>ProteinLength</b>	1-329 aa
<b>Form</b>	Lyophilized from sterile PBS, pH 7.4.
<b>Molecular Mass</b>	The recombinant human IL18R1 comprises 322 amino acids with a predicted molecular mass of 37.2 kDa. As a result of glycosylation, the apparent molecular mass of rhIL18R1 is approximately 60-70 kDa in SDS-PAGE under reducing conditions.
<b>Endotoxin</b>	< 1.0 EU per µg of the protein as determined by the LAL method.
<b>Purity</b>	> 95 % as determined by SDS-PAGE
<b>Storage</b>	Store it under sterile conditions at -20°C to -80°C upon receiving. Recommend to aliquot the protein into smaller quantities for optimal storage. Avoid repeated freeze-thaw cycles.
<b>Reconstitution</b>	It is recommended that sterile water be added to the vial to prepare a stock solution of

 Tel: 1-631-559-9269 1-516-512-3133

 Email: [info@creative-biomart.com](mailto:info@creative-biomart.com)  Fax: 1-631-938-8127

 45-1 Ramsey Road, Shirley, NY 11967, USA

0.2 ug/ul. Centrifuge the vial at 4°C before opening to recover the entire contents.

**protein Refseq-Weblink** [http://www.ncbi.nlm.nih.gov/protein/NP\\_003846.1](http://www.ncbi.nlm.nih.gov/protein/NP_003846.1)

**Unit ID** Q13478

**Unit ID-Weblink** <https://www.uniprot.org/uniprotkb/Q13478>

## GENE INFORMATION

**Gene Name** [IL18R1 interleukin 18 receptor 1 \[ Homo sapiens \]](#)

**Official Symbol** [IL18R1](#)

**Synonyms** IL18R1; interleukin 18 receptor 1; interleukin-18 receptor 1; CD218a; IL 1Rrp; IL1RRP; IL-18R1; IL1R-rp; IL-18R-1; cytokine receptor; IL1 receptor-related protein; CD218 antigen-like family member A; IL18RA; CDw218a; IL-1Rrp;

**Gene ID** [8809](#)

**mRNA Refseq** [NM\\_003855](#)

**protein Refseq** [NP\\_003846](#)

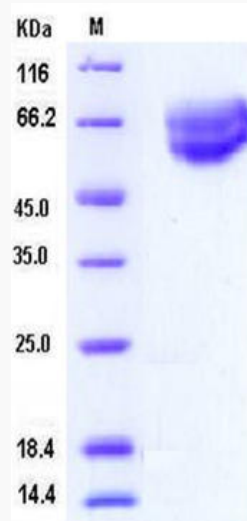
**MIM** [604494](#)

 Tel: 1-631-559-9269 1-516-512-3133

 Email: [info@creative-biomart.com](mailto:info@creative-biomart.com)  Fax: 1-631-938-8127

 45-1 Ramsey Road, Shirley, NY 11967, USA

**SDS-PAGE**



 Tel: 1-631-559-9269 1-516-512-3133

 Email: [info@creative-biomart.com](mailto:info@creative-biomart.com)  Fax: 1-631-938-8127

 45-1 Ramsey Road, Shirley, NY 11967, USA