

Recombinant Human IL18RAP protein, His-tagged

Cat. No. IL18RAP-5733H Lot. No. (See product label)

SPECIFICATION

Product Overview	Recombinant Human IL18RAP protein(O95256-1)(Phe20-Arg356), fused with C-terminal His tag, was expressed in HEK293.
Species	Human
Source	HEK293
ProteinLength	Phe20-Arg356
Tag	C-His
Form	Lyophilized from 0.22µm filtered solution in PBS (pH 7.4). Normally 5% trehalose is added as protectant before lyophilization.
Bio-activity	Immobilized Human IL-18RAP, His Tag at 1ug/ml (100ul/well) on the plate. Dose response curve for Anti-IL-18RAP Antibody, hFc Tag with the EC50 of 6.2ng/ml determined by ELISA.
Molecular Mass	The protein has a predicted MW of 39.3 kDa. Due to glycosylation, the protein migrates to 55-65 kDa based on Tris-Bis PAGE result.
Endotoxin	Less than 1EU per µg by the LAL method.
Purity	> 95% as determined by Tris-Bis PAGE;> 95% as determined by HPLC

 Tel: 1-631-559-9269 1-516-512-3133

 Email: info@creative-biomart.com  Fax: 1-631-938-8127

 45-1 Ramsey Road, Shirley, NY 11967, USA

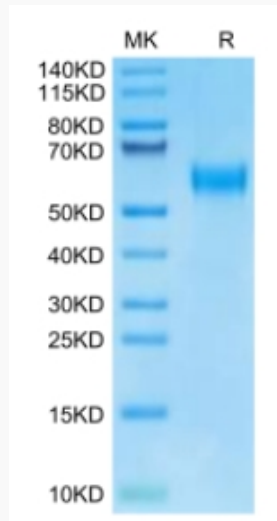
Storage	Reconstituted protein stable at -80°C for 12 months, 4°C for 1 week. Use a manual defrost freezer and avoid repeated freeze-thaw cycles.
Reconstitution	Centrifuge tubes before opening. Reconstituting to a concentration more than 100 µg/ml is recommended. Dissolve the lyophilized protein in distilled water.
GENE INFORMATION	
Gene Name	IL18RAP interleukin 18 receptor accessory protein [Homo sapiens]
Official Symbol	IL18RAP
Synonyms	IL18RAP; interleukin 18 receptor accessory protein; interleukin-18 receptor accessory protein; AcPL; CD218b; IL-1R7; IL-1R-7; IL-18RAcP; IL-1RAcPL; IL-18Rbeta; IL-18R-beta; IL-18 receptor beta; interleukin-1 receptor 7; interleukin-18 receptor beta; IL-18 receptor accessory protein; CD218 antigen-like family member B; ACPL; IL18RB; CDw218b; MGC120589; MGC120590;
Gene ID	8807
mRNA Refseq	NM_003853
Protein Refseq	NP_003844
MIM	604509
UniProt ID	O95256

 Tel: 1-631-559-9269 1-516-512-3133

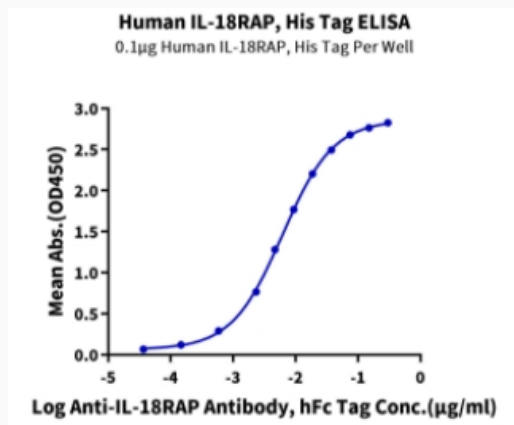
 Email: info@creative-biomart.com  Fax: 1-631-938-8127

 45-1 Ramsey Road, Shirley, NY 11967, USA

Tris-Bis PAGE



ELISA Data



 Tel: 1-631-559-9269 1-516-512-3133

 Email: info@creative-biomart.com  Fax: 1-631-938-8127

 45-1 Ramsey Road, Shirley, NY 11967, USA