

# Recombinant Human IL1A protein, MBP&His-Avi-tagged, Biotinylated

**Cat. No.** IL1A-1399H    **Lot. No.** (See product label)

## SPECIFICATION

<b>Product Overview</b>	Biotinylated Recombinant Human IL1A protein(P01583)(113-271aa), fused to N-terminal MBP tag and C-terminal His-Avi tag, was expressed in E. coli.
<b>Species</b>	Human
<b>Source</b>	E.coli
<b>ProteinLength</b>	113-271aa
<b>Form</b>	If the delivery form is liquid, the default storage buffer is Tris/PBS-based buffer, 5%-50% glycerol. If the delivery form is lyophilized powder, the buffer before lyophilization is Tris/PBS-based buffer, 6% Trehalose, pH 8.0.
<b>Molecular Mass</b>	65.8 kDa
<b>Purity</b>	Greater than 85% as determined by SDS-PAGE.
<b>Storage</b>	Store at -20°C/-80°C upon receipt, aliquoting is necessary for multiple use. Avoid repeated freeze-thaw cycles.
<b>Reconstitution</b>	It is recommended that sterile water be added to the vial to prepare a stock solution of 0.2 ug/ul. Centrifuge the vial at 4°C before opening to recover the entire contents.
<b>Conjugation</b>	Biotin

 Tel: 1-631-559-9269    1-516-512-3133

 Email: [info@creative-biomart.com](mailto:info@creative-biomart.com)     Fax: 1-631-938-8127

 45-1 Ramsey Road, Shirley, NY 11967, USA

## GENE INFORMATION

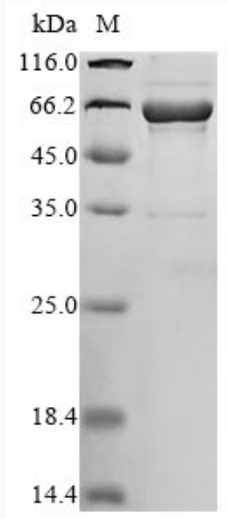
<b>Gene Name</b>	IL1A interleukin 1, alpha [ Homo sapiens ]
<b>Official Symbol</b>	IL1A
<b>Synonyms</b>	IL1A; interleukin 1, alpha; IL1; interleukin-1 alpha; hematopoietin 1; IL 1A; IL1 ALPHA; IL1F1; preinterleukin 1 alpha; pro interleukin 1 alpha; IL-1 alpha; hematopoietin-1; pro-interleukin-1-alpha; IL-1A; IL1-ALPHA;
<b>Gene ID</b>	3552
<b>mRNA Refseq</b>	NM_000575
<b>Protein Refseq</b>	NP_000566
<b>MIM</b>	147760
<b>UniProt ID</b>	P01583

 Tel: 1-631-559-9269 1-516-512-3133

 Email: [info@creative-biomart.com](mailto:info@creative-biomart.com)  Fax: 1-631-938-8127

 45-1 Ramsey Road, Shirley, NY 11967, USA

**SDS-PAGE**



 Tel: 1-631-559-9269 1-516-512-3133

 Email: [info@creative-biomart.com](mailto:info@creative-biomart.com)  Fax: 1-631-938-8127

 45-1 Ramsey Road, Shirley, NY 11967, USA