

Recombinant Active Human IL1A Protein, His-tagged(C-ter)

Cat. No. IL1A-159H Lot. No. (See product label)

SPECIFICATION

Product Overview	Recombinant Active Human IL1A Protein with His tag (C-ter) was expressed in E. coli.
Species	Human
Source	E.coli
Description	The protein encoded by this gene is a member of the interleukin 1 cytokine family. This cytokine is a pleiotropic cytokine involved in various immune responses, inflammatory processes, and hematopoiesis. This cytokine is produced by monocytes and macrophages as a proprotein, which is proteolytically processed and released in response to cell injury, and thus induces apoptosis. This gene and eight other interleukin 1 family genes form a cytokine gene cluster on chromosome 2. It has been suggested that the polymorphism of these genes is associated with rheumatoid arthritis and Alzheimer's disease. [provided by RefSeq, Jul 2008]
Form	Powder
Bio-activity	Determined by its ability to induce D10.G4.1 cells proliferation. The ED50 for this effect is < 10 pg/ml. The specific activity of recombinant human IL-1 alpha is approximately > 1 x 10 ⁸ IU/mg.
AA Sequence	MSAPFSFLSNVKYNFMRIIKYEFILNDALNQSIIIRANDQYLTAALHNLDEAVKFDMGAYKSSKDDAKITVILRISKTKLYVTAQDEDQPVLLKEMPEIPKTTITGSETNLLFFWETHG TKNYFTSVAHPNLFIAKQDYVWVCLAGGPPSITDFQILENQA

 Tel: 1-631-559-9269 1-516-512-3133

 Email: info@creative-biomart.com  Fax: 1-631-938-8127

 45-1 Ramsey Road, Shirley, NY 11967, USA

Endotoxin	Endotoxin level is less than 0.1 EU/μg of the protein, as determined by the LAL test.
Purity	> 98% (by SDS-PAGE)
Applications	SDS-PAGE
Notes	For laboratory research only, not for drug, diagnostic or other use.
Storage	Lyophilized protein should be stored at -20°C. After reconstitution, aliquot and store at -20°C or -80°C for up to one month. Storage in frost free freezers is not recommended. Avoid repeated freeze/thaw cycles. Suggest spin the vial prior to opening.
Storage Buffer	PBS (pH 8.0)
Reconstitution	It is recommended to reconstitute the lyophilized protein in sterile water to a concentration not less than 100 μg/mL and incubate the stock solution for at least 20 min at room temperature to make sure the protein is dissolved completely.

GENE INFORMATION

Gene Name	IL1A interleukin 1, alpha [Homo sapiens]
Official Symbol	IL1A
Synonyms	IL1A; interleukin 1, alpha; IL1; interleukin-1 alpha; hematopoietin 1; IL 1A; IL1 ALPHA; IL1F1; preinterleukin 1 alpha; pro interleukin 1 alpha; IL-1 alpha; hematopoietin-1; pro-interleukin-1-alpha; IL-1A; IL1-ALPHA;
Gene ID	3552

 Tel: 1-631-559-9269 1-516-512-3133

 Email: info@creative-biomart.com  Fax: 1-631-938-8127

 45-1 Ramsey Road, Shirley, NY 11967, USA

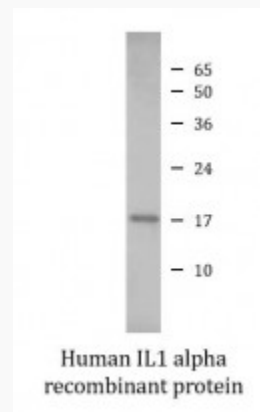
mRNA Refseq [NM_000575](#)

Protein Refseq [NP_000566](#)

MIM [147760](#)

UniProt ID [P01583](#)

SDS-PAGE



 Tel: 1-631-559-9269 1-516-512-3133

 Email: info@creative-biomart.com  Fax: 1-631-938-8127

 45-1 Ramsey Road, Shirley, NY 11967, USA