

Recombinant Human IL1A protein, GST-tagged

Cat. No. IL1A-16458H Lot. No. (See product label)

SPECIFICATION

Product Overview	Recombinant Human IL1A protein(113-271 aa), fused with N-terminal GST tag, was expressed in E. coli.
ProteinLength	113-271 aa
Tag	N-GST
Form	The purified protein was Lyophilized from sterile PBS (58mM Na ₂ HPO ₄ , 17mM NaH ₂ PO ₄ , 68mM NaCl, pH7.4). 5 % trehalose and 5 % mannitol are added as protectant before lyophilization.
Purity	90%, by SDS-PAGE with Coomassie Brilliant Blue staining.
Storage	Short-term storage: Store at 2-8°C for (1-2 weeks). Long-term storage: Aliquot and store at -20°C to -80°C for up to 3 months, reconstitution with sterile water and addition of an equal volume of glycerol. Avoid repeat freeze-thaw cycles.
Reconstitution	Reconstitute at 0.25 µg/µl in 200 µl sterile water for short-term storage. After reconstitution with sterile water, if glycerol has no effect on subsequent experiments, it is recommended to add an equal volume of glycerol for long-term storage.
AA Sequence	SAPFSFLSNVKYNFMRIIKYEFILNDALNQSIIRANDQYLTAALHNLDEAVKFDMGAY KSSKDDAKITVILRISKTKQLYVTAQDEDQPVLLKEMPEIPKTITGSETNLLFFWETHGT KNYFTSVAHPNLFIA TKQDYWVCLAGGPPSITDFQILENQA

 Tel: 1-631-559-9269 1-516-512-3133

 Email: info@creative-biomart.com  Fax: 1-631-938-8127

 45-1 Ramsey Road, Shirley, NY 11967, USA

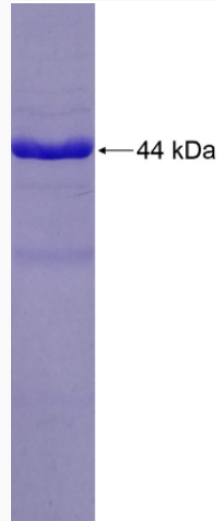
GENE INFORMATION

Gene Name	IL1A interleukin 1, alpha [Homo sapiens]
Official Symbol	IL1A
Synonyms	IL1A; interleukin 1, alpha; IL1; interleukin-1 alpha; hematopoietin 1; IL 1A; IL1 ALPHA; IL1F1; preinterleukin 1 alpha; pro interleukin 1 alpha; IL-1 alpha; hematopoietin-1; pro-interleukin-1-alpha; IL-1A; IL1-ALPHA;
Gene ID	3552
mRNA Refseq	NM_000575
Protein Refseq	NP_000566
MIM	147760
UniProt ID	P01583

 Tel: 1-631-559-9269 1-516-512-3133 Email: info@creative-biomart.com  Fax: 1-631-938-8127 45-1 Ramsey Road, Shirley, NY 11967, USA



SDS-PAGE



Tel: 1-631-559-9269 1-516-512-3133

Email: info@creative-biomart.com Fax: 1-631-938-8127

45-1 Ramsey Road, Shirley, NY 11967, USA