

Recombinant Human IL1A Protein (Ser113-Ala271), C-His tagged

Cat. No. IL1A-2462H Lot. No. (See product label)

SPECIFICATION

Product Overview	Recombinant human IL1A (Ser113-Ala271) protein fused with the C-terminal His tag was expressed in E. coli.
Species	Human
Source	E.coli
ProteinLength	Ser113-Ala271
Molecular Mass	19.2 kDa
Purity	>90 % as determined by SDS-PAGE.
Notes	For research use only.
Storage	Use a manual defrost freezer and avoid repeated freeze thaw cycles. Store at 2 to 8 centigrade for one week. Store at -20 to -80 centigrade for twelve months from the date of receipt.
Storage Buffer	Supplied as solution form in 50 mM Tris-HCl pH 8.0, 150 mM NaCl or lyophilized from 50 mM Tris-HCl pH 8.0, 150 mM NaCl.
Reconstitution	Reconstitute in sterile water for a stock solution.

 Tel: 1-631-559-9269 1-516-512-3133

 Email: info@creative-biomart.com  Fax: 1-631-938-8127

 45-1 Ramsey Road, Shirley, NY 11967, USA

Shipping

In general, proteins are provided as lyophilized powder/frozen liquid. They are shipped out with dry ice/blue ice unless customers require otherwise.

GENE INFORMATION

Gene Name IL1A interleukin 1, alpha [Homo sapiens (human)]

Official Symbol IL1A

Synonyms IL1A; interleukin 1, alpha; IL1; interleukin-1 alpha; hematopoietin 1; IL 1A; IL1 ALPHA; IL1F1; preinterleukin 1 alpha; pro interleukin 1 alpha; IL-1 alpha; hematopoietin-1; pro-interleukin-1-alpha; IL-1A; IL1-ALPHA;

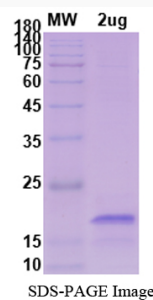
Gene ID 3552

mRNA Refseq NM_000575

Protein Refseq NP_000566

MIM 147760

UniProt ID P01583

SDS-PAGE


 Tel: 1-631-559-9269 1-516-512-3133

 Email: info@creative-biomart.com  Fax: 1-631-938-8127

 45-1 Ramsey Road, Shirley, NY 11967, USA