

Active Recombinant Human IL1A protein

Cat. No. IL1A-501H Lot. No. (See product label)

SPECIFICATION

Product Overview	Active Recombinant Human IL1A protein(NP_000566.3) (Ser 113-Ala 271) was expressed and purified in Human Cells.
Species	Human
Source	Human Cells
ProteinLength	113-271 aa
Form	Lyophilized from sterile 50mM Tris, 100mM NaCl, pH 8.0.
Bio-activity	Measured in a cell proliferation assay using D10.G4.1 mouse helper T cells. The ED50 for this effect is typically 0.2-1 ng/mL.
Molecular Mass	The recombinant human IL1 α consists of 159 amino acids and has a predicted molecular mass of 18 kDa. As a result of glycosylation, the apparent molecular mass of rhIL1 α is approximately 22 kDa in SDS-PAGE under reducing conditions.
Endotoxin	< 1.0 EU per μ g of the protein as determined by the LAL method.
Purity	> 95 % as determined by SDS-PAGE
Storage	Store it under sterile conditions at -20°C to -80°C upon receiving. Recommend to aliquot the protein into smaller quantities for optimal storage. Avoid repeated freeze-thaw cycles.

 Tel: 1-631-559-9269 1-516-512-3133

 Email: info@creative-biomart.com  Fax: 1-631-938-8127

 45-1 Ramsey Road, Shirley, NY 11967, USA

Reconstitution It is recommended that sterile water be added to the vial to prepare a stock solution of 0.2 ug/ul. Centrifuge the vial at 4°C before opening to recover the entire contents.

GENE INFORMATION

Gene Name IL1A interleukin 1, alpha [Homo sapiens]

Official Symbol IL1A

Synonyms IL1A; interleukin 1, alpha; IL1; interleukin-1 alpha; hematopoietin 1; IL 1A; IL1 ALPHA; IL1F1; preinterleukin 1 alpha; pro interleukin 1 alpha; IL-1 alpha; hematopoietin-1; pro-interleukin-1-alpha; IL-1A; IL1-ALPHA;

Gene ID 3552

mRNA Refseq NM_000575

Protein Refseq NP_000566

MIM 147760

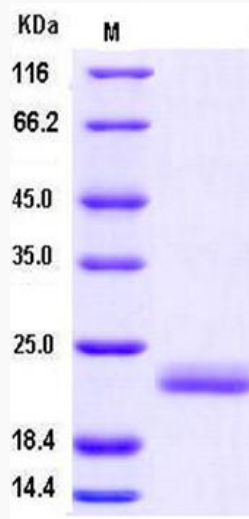
UniProt ID P01583

 Tel: 1-631-559-9269 1-516-512-3133

 Email: info@creative-biomart.com  Fax: 1-631-938-8127

 45-1 Ramsey Road, Shirley, NY 11967, USA

SDS-PAGE



 Tel: 1-631-559-9269 1-516-512-3133

 Email: info@creative-biomart.com  Fax: 1-631-938-8127

 45-1 Ramsey Road, Shirley, NY 11967, USA