

# Recombinant Rhesus Macaque IL1A Protein (113-271 aa), His-SUMO-tagged

Cat. No. IL1A-577R Lot. No. (See product label)

## SPECIFICATION

<b>Product Overview</b>	Recombinant Rhesus Macaque IL1A Protein (113-271 aa) is produced by E. coli expression system. This protein is fused with a 6xHis-SUMO tag at the N-terminal. Protein Description: Full Length of Mature Protein.
<b>Species</b>	Rhesus macaque
<b>Source</b>	E.coli
<b>ProteinLength</b>	113-271 aa
<b>Description</b>	Produced by activated macrophages, IL-1 stimulates thymocyte proliferation by inducing IL-2 release, B-cell maturation and proliferation, and fibroblast growth factor activity. IL-1 proteins are involved in the inflammatory response, being identified as endogenous pyrogens, and are reported to stimulate the release of prostaglandin and collagenase from synovial cells.
<b>Form</b>	Tris-based buffer, 50% glycerol
<b>Molecular Mass</b>	34.1 kDa
<b>AA Sequence</b>	SAPFSFLSNMTYHFIRIIKHEFILNDTLNQTIIIRANDQHLTAAAIHNLDEAVKFDMGAYT SSKDDTKVPVILRISKTKQLYVSAQDEDQPVLLKEMPEINKTITGSETNFFWETHGT KNYFISVAHPNLFIA TKHDNWWVCLAKGLPSITDFQILENQA

 Tel: 1-631-559-9269 1-516-512-3133

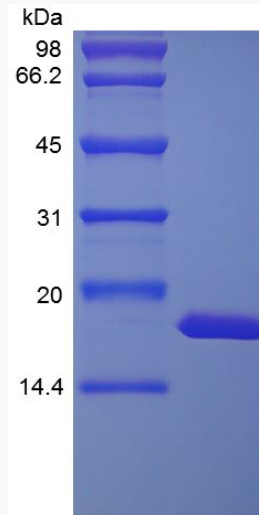
 Email: [info@creative-biomart.com](mailto:info@creative-biomart.com)  Fax: 1-631-938-8127

 45-1 Ramsey Road, Shirley, NY 11967, USA

<b>Purity</b>	> 90% as determined by SDS-PAGE.
<b>Notes</b>	Repeated freezing and thawing is not recommended. Store working aliquots at 4 centigrade for up to one week.
<b>Storage</b>	The shelf life is related to many factors, storage state, buffer ingredients, storage temperature and the stability of the protein itself. Generally, the shelf life of liquid form is 6 months at -20 centigrade/-80 centigrade. The shelf life of lyophilized form is 12 months at -20 centigrade/-80 centigrade.
<b>Concentration</b>	A hardcopy of COA with concentration instruction is sent along with the products.

## GENE INFORMATION

**UniProt ID** [P48089](https://www.uniprot.org/entry/P48089)



(Tris-Glycine gel) Discontinuous SDS-PAGE (reduced) with 5% enrichment gel and 15% separation gel.

 Tel: 1-631-559-9269 1-516-512-3133

 Email: [info@creative-biomart.com](mailto:info@creative-biomart.com)  Fax: 1-631-938-8127

 45-1 Ramsey Road, Shirley, NY 11967, USA