

Active Recombinant Rhesus IL1A protein

Cat. No. IL1A-83R Lot. No. (See product label)

SPECIFICATION

Product Overview	Active Recombinant Rhesus IL1A protein(P48089)(113-271 aa) was expressed in E.coli.
Species	Rhesus
Source	E.coli
ProteinLength	113-271 aa
Form	Lyophilized from a 0.2 µ filtered concentrated solution in PBS, pH 7.4.
Bio-activity	Fully biologically active when compared to standard. The ED50 as determined by a cell proliferation assay using murine D10S cells is less than 10 pg/ml, corresponding to a specific activity of > 1.0 × 10 ⁸ IU/mg.
Molecular Mass	Approximately 18.1 kDa, a single non-glycosylated polypeptide chain containing 159 amino acids.
AASequence	SAPFSFLSNM TYHFIRIKH EFILNDTLNQ TIIRANDQHL TAAAIHNLDE AVKFDMGAYT SSKDDTKVPV ILRISKTKLY VSAQDEDQPV LLKEMPEINK TITGSETNFL FFWETHGTKN YFISVAHPNL FIATKHDNWV CLAKGLPSIT DFQILENQA
Endotoxin	Less than 0.1 EU/g of rRhIL-1α as determined by LAL method.

 Tel: 1-631-559-9269 1-516-512-3133

 Email: info@creative-biomart.com  Fax: 1-631-938-8127

 45-1 Ramsey Road, Shirley, NY 11967, USA

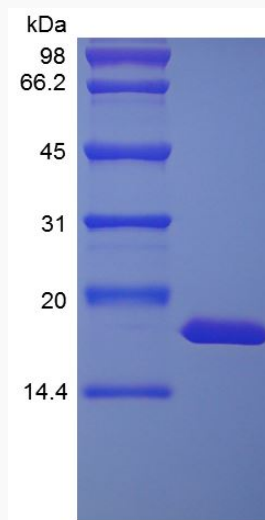
Purity >97% by SDS-PAGE and HPLC analyses.

Storage

Use a manual defrost freezer and avoid repeated freeze-thaw cycles. - 12 months from date of receipt, -20 to -70 °C as supplied. - 1 month, 2 to 8 °C under sterile conditions after reconstitution. - 3 months, -20 to -70 °C under sterile conditions after reconstitution.

Reconstitution

We recommend that this vial be briefly centrifuged prior to opening to bring the contents to the bottom. Reconstitute in sterile distilled water or aqueous buffer containing 0.1 % BSA to a concentration of 0.1-1.0 mg/mL. Stock solutions should be apportioned into working aliquots and stored at ≤ -20 °C. Further dilutions should be made in appropriate buffered solutions.

SDS-PAGE

Tel: 1-631-559-9269 1-516-512-3133

Email: info@creative-biomart.com Fax: 1-631-938-8127

45-1 Ramsey Road, Shirley, NY 11967, USA