

Active Recombinant Dog IL1B Protein

Cat. No. IL1B-019D Lot. No. (See product label)

SPECIFICATION

Product Overview	Recombinant canine IL-1beta was expressed in E. coli and purified by using conventional chromatography techniques.
Species	Dog
Source	E.coli
Description	Potent proinflammatory cytokine. Initially discovered as the major endogenous pyrogen, induces prostaglandin synthesis, neutrophil influx and activation, T-cell activation and cytokine production, B-cell activation and antibody production, and fibroblast proliferation and collagen production.
Form	Liquid
Bio-activity	Measured in a cell proliferation assay using D10.G4.1 mouse helper T cells. The ED50 range ≤ 5 pg/mL.
Molecular Mass	17.5 kDa
AA Sequence	MAAMQSV DCKLQDISHKYLVL SNSYELRALHLNGENVNKQVVFHMSFVHGDESNN KIPVVLG IKQKNLYLSCVMKDGKPTLQLEKVDPKVYPKRKMEKRFVFNKIEIKNTVEF ESSQYPN WYISTSQVEGMPVFLGNTRGGQDITDFTMEFSS
Endotoxin	< 1 EU/ μ g of protein (determined by LAL method)

 Tel: 1-631-559-9269 1-516-512-3133

 Email: info@creative-biomart.com  Fax: 1-631-938-8127

 45-1 Ramsey Road, Shirley, NY 11967, USA

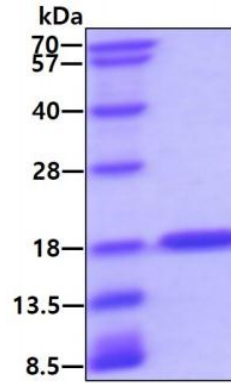
Purity	> 95% by SDS-PAGE
Applications	SDS-PAGE, Bioactivity
Storage	Can be stored at +2 to +8 centigrade for 1 week. For long term storage, aliquot and store at -20 to -98 centigrade. Avoid repeated freezing and thawing cycles.
Concentration	1 mg/mL (determined by absorbance at 280nm)
Storage Buffer	Phosphate-Buffered Saline (pH 7.4)
GENE INFORMATION	
Gene Name	IL1B interleukin 1 beta [<i>Canis lupus familiaris</i> (dog)]
Official Symbol	IL1B
Synonyms	IL1B; interleukin 1 beta; IL-1; interleukin-1 beta; IL-1 beta; interleukin-1 beta proprotein
Gene ID	403974
mRNA Refseq	NM_001037971
Protein Refseq	NP_001033060.1
UniProt ID	Q2VCE2

 Tel: 1-631-559-9269 1-516-512-3133

 Email: info@creative-biomart.com  Fax: 1-631-938-8127

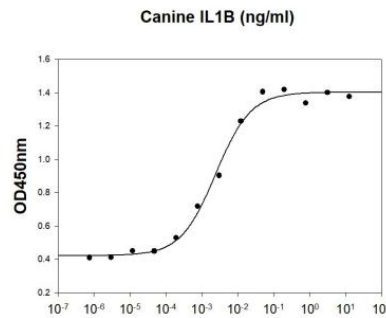
 45-1 Ramsey Road, Shirley, NY 11967, USA

SDS-PAGE



3 μ g by SDS-PAGE under reducing condition and visualized by coomassie blue stain

Biological Activity



Canine IL-1B stimulates cell proliferation of the D10.G4.1 mouse helper T cells. The ED50 range range \leq 5pg/ml.

 Tel: 1-631-559-9269 1-516-512-3133

 Email: info@creative-biomart.com  Fax: 1-631-938-8127

 45-1 Ramsey Road, Shirley, NY 11967, USA