

## Active Recombinant Human IL1B Protein (Ala117-Ser269), C-His tagged, Animal-free, Carrier-free

Cat. No. IL1B-163H Lot. No. (See product label)

### SPECIFICATION

<b>Product Overview</b>	Recombinant Human IL1B Protein (Ala117-Ser269) with C-His tag was expressed in E. coli and Animal-free as well as Carrier-free.
<b>Species</b>	Human
<b>Source</b>	E.coli
<b>ProteinLength</b>	Ala117-Ser269
<b>Description</b>	Interleukin-1 beta (IL-1 $\beta$ ) is a major cytokine expressed in macrophage, NK cells, monocytes, and neutrophils. It also plays fundamental role in inflammatory response, including monocyte activation, which is essential for the host defense and pathogen resistance. Pro-IL-1 $\beta$ is cleaved by cytosolic caspase 1 to form mature IL-1 $\beta$ .
<b>Form</b>	Lyophilized
<b>Bio-activity</b>	Measure by its ability to induce IL-8 secretion in HT29 cells. The ED50 for this effect is < 2.0 ng/mL. The specific activity of recombinant human IL-1 beta is approximately >3 $\times$ 10 <sup>7</sup> IU/mg.
<b>Molecular Mass</b>	The protein has a calculated MW of 18.5 kDa. The protein migrates as 17 kDa under reducing condition (SDS-PAGE analysis).
<b>Endotoxin</b>	< 0.1 EU/ $\mu$ g of the protein by the LAL method.

 Tel: 1-631-559-9269 1-516-512-3133

 Email: [info@creative-biomart.com](mailto:info@creative-biomart.com)  Fax: 1-631-938-8127

 45-1 Ramsey Road, Shirley, NY 11967, USA

<b>Purity</b>	>98% as determined by SDS-PAGE analysis.
<b>Storage</b>	This product is stable after storage at: -20 centigrade for 12 months in lyophilized state from date of receipt. -20 or -80 centigrade for 1 month under sterile conditions after reconstitution. Avoid repeated freeze/thaw cycles.
<b>Storage Buffer</b>	Lyophilized from a 0.2 µm filtered solution of PBS, pH 8.0.
<b>Reconstitution</b>	It is recommended to reconstitute the lyophilized protein in sterile H2O to a concentration not less than 200 µg/mL and incubate the stock solution for at least 20 min to ensure sufficient re-dissolved.
<b>Shipping</b>	The product is shipped with polar packs. Upon receipt, store it immediately at -20 centigrade or lower for long term storage.

## GENE INFORMATION

<b>Gene Name</b>	IL1B interleukin 1, beta [ Homo sapiens (human) ]
<b>Official Symbol</b>	IL1B
<b>Synonyms</b>	IL1B; interleukin 1, beta; interleukin-1 beta; IL 1B; IL1 BETA; IL1F2; IL-1 beta; catabolin; preinterleukin 1 beta; pro-interleukin-1-beta; IL-1; IL1-BETA;
<b>Gene ID</b>	3553
<b>mRNA Refseq</b>	NM_000576
<b>Protein Refseq</b>	NP_000567

 Tel: 1-631-559-9269 1-516-512-3133

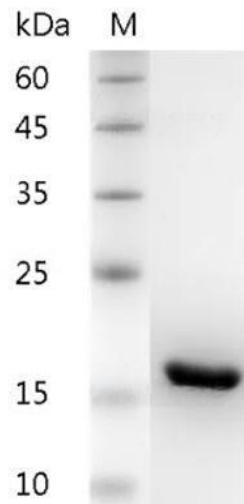
 Email: [info@creative-biomart.com](mailto:info@creative-biomart.com)  Fax: 1-631-938-8127

 45-1 Ramsey Road, Shirley, NY 11967, USA

MIM 147720

UniProt ID P01584

**SDS-PAGE analysis  
of recombinant  
human IL-1 Beta.**



Tel: 1-631-559-9269 1-516-512-3133

Email: [info@creative-biomart.com](mailto:info@creative-biomart.com) Fax: 1-631-938-8127

45-1 Ramsey Road, Shirley, NY 11967, USA