

Active Recombinant Pig IL1B Protein (Ala115-Pro267), C-His tagged, Animal-free, Carrier-free

Cat. No. IL1B-205P Lot. No. (See product label)

SPECIFICATION

Product Overview	Recombinant Pig IL1B Protein (Ala115-Pro267) with C-His tag was expressed in E. coli and Animal-free as well as Carrier-free.
Species	Pig
Source	E.coli
ProteinLength	Ala115-Pro267
Description	Interleukin-1 beta (IL-1 β) is a major cytokine expressed in macrophage, NK cells, monocytes, and neutrophils. It also plays fundamental role in inflammatory response, including monocyte activation, which is essential for the host defense and pathogen resistance. Pro-IL-1 β is cleaved by cytosolic caspase 1 to form mature IL-1 β .
Form	Lyophilized
Bio-activity	Measure by its ability to induce D10.G4.1 cells proliferation. The ED50 for this effect is < 3 ng/mL.
Molecular Mass	The protein has a calculated MW of 18.51 kDa. The protein migrates as 20 kDa under reducing condition (SDS-PAGE analysis).
Endotoxin	< 0.1 EU/ μ g of the protein by the LAL method.

 Tel: 1-631-559-9269 1-516-512-3133

 Email: info@creative-biomart.com  Fax: 1-631-938-8127

 45-1 Ramsey Road, Shirley, NY 11967, USA

Purity	>98% as determined by SDS-PAGE analysis.
Storage	This product is stable after storage at: -20 centigrade for 12 months in lyophilized state from date of receipt. -20 or -80 centigrade for 1 month under sterile conditions after reconstitution. Avoid repeated freeze/thaw cycles.
Storage Buffer	Lyophilized from a 0.2 µm filtered solution of PBS, pH 7.4.
Reconstitution	It is recommended to reconstitute the lyophilized protein in sterile H2O to a concentration not less than 200 µg/mL and incubate the stock solution for at least 20 min to ensure sufficient re-dissolved.
Shipping	The product is shipped with polar packs. Upon receipt, store it immediately at -20 centigrade or lower for long term storage.

GENE INFORMATION

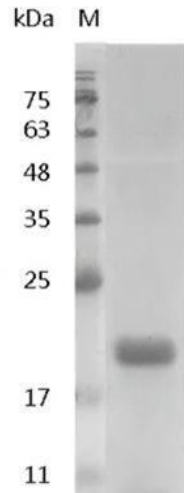
Gene Name	IL1B interleukin 1, beta [<i>Sus scrofa</i>]
Official Symbol	IL1B
Synonyms	IL1B; interleukin 1, beta; interleukin-1 beta; IL-1 beta; prointerleukin-1 beta;
Gene ID	397122
mRNA Refseq	NM_214055
Protein Refseq	NP_999220
UniProt ID	P26889

 Tel: 1-631-559-9269 1-516-512-3133

 Email: info@creative-biomart.com  Fax: 1-631-938-8127

 45-1 Ramsey Road, Shirley, NY 11967, USA

**SDS-PAGE analysis
of recombinant
swine IL-1 beta.**



 Tel: 1-631-559-9269 1-516-512-3133

 Email: info@creative-biomart.com  Fax: 1-631-938-8127

 45-1 Ramsey Road, Shirley, NY 11967, USA