

## Recombinant Rhesus IL1B protein

Cat. No. IL1B-559R Lot. No. (See product label)

### SPECIFICATION

|                         |   |
|-------------------------|---|
| <b>Product Overview</b> | Recombinant Rhesus IL1B protein was expressed in Escherichia coli.  |
| <b>Species</b>          | Rhesus macaque  |
| <b>Source</b>           | E.coli  |
| <b>ProteinLength</b>    | 153   |
| <b>Description</b>      | <p>Interleukin-1beta (IL-1<math>\beta</math>) is a non-secreted proinflammatory cytokine produced mainly by activated macrophages, as well as neutrophils, epithelial cells, and endothelial cells. It possesses metabolic, physiological, haematopoietic activities, and plays one of the central roles in the regulation of the immune responses. Both IL-1<math>\alpha</math> and IL-1<math>\beta</math> binds to the same receptor and has similar if not identical biological properties. These cytokines have a broad range of activities including, stimulation of thymocyte proliferation, by inducing IL-2 release, B-cell maturation and proliferation, mitogenic FGF-like activity and the ability to stimulate the release of prostaglandin and collagenase from synovial cells. The mature Rhesus macaque IL1<math>\beta</math> shares 96% amino acid sequence identity with rhesus and 67% -78% with canine, mouse and rat IL1<math>\beta</math>.</p> |
| <b>Form</b>             | Lyophilized from a 0.2 $\mu$ m filtered concentrated solution in PBS, pH 7.4.   |
| <b>Bio-activity</b>     | Fully biologically active when compared to standard. The ED50 as determined by a cell proliferation assay using murine D10.G4.1 cells is less than 10 pg/ml,  |

 Tel: 1-631-559-9269 1-516-512-3133

 Email: [info@creative-biomart.com](mailto:info@creative-biomart.com)  Fax: 1-631-938-8127

 45-1 Ramsey Road, Shirley, NY 11967, USA

|                       |   |
|-----------------------|---|
|                       | corresponding to a specific activity of $> 1.0 \times 10^8$ IU/mg.  |
| <b>Molecular Mass</b> | Approximately 17.3 kDa, a single non-glycosylated polypeptide chain containing 153 amino acids.   |
| <b>AA Sequence</b>    | APVRS LHCTLRDAQ LKSLVMSGPYELKALHLQGQDLEQQVVFSSMSFVQGGEESNDKI<br>PVALGLKAKNLYLSCVLKDDKPTLQLESVDPKNYPKKKMEKRFVFNKIEINNKLFEFES<br>AQFPNWIYSTSQAENMPVFLGGTRGGQDITDFTMQFVSS  |
| <b>Endotoxin</b>      | Less than 1 EU/g of rRhIL-1 $\beta$ as determined by LAL method.  |
| <b>Purity</b>         | >98% by SDS-PAGE and HPLC analysis.   |
| <b>Storage</b>        | Use a manual defrost freezer and avoid repeated freeze-thaw cycles. 12 months from date of receipt, -20 to -70 centigrade as supplied. 1 month, 2 to 8 centigrade under sterile conditions after reconstitution. 3 months, -20 to -70 centigrade under sterile conditions after reconstitution.   |
| <b>Reconstitution</b> | We recommend that this vial be briefly centrifuged prior to opening to bring the contents to the bottom. Reconstitute in sterile distilled water or aqueous buffer containing 0.1 % BSA to a concentration of 0.1-1.0 mg/mL. Stock solutions should be apportioned into working aliquots and stored at $\leq -20$ centigrade. Further dilutions should be made in appropriate buffered solutions. |

## GENE INFORMATION

|                        |   |
|------------------------|---|
| <b>Gene Name</b>       | IL1B  |
| <b>Official Symbol</b> | IL1B  |
| <b>Synonyms</b>        | Catabolin, Leukocyte Endogenous Mediator, LEM, Lymphocyte-activating factor , |

 Tel: 1-631-559-9269 1-516-512-3133

 Email: [info@creative-biomart.com](mailto:info@creative-biomart.com)  Fax: 1-631-938-8127

 45-1 Ramsey Road, Shirley, NY 11967, USA

LAF, Mononuclear Cell Factor, MCF , Endogenous Pyrogen, EP

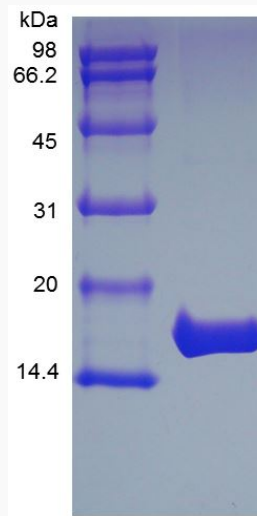
Gene ID 704701

mRNA Refseq NM\_001042756.1

Protein Refseq NP\_001036221.1

UniProt ID P48090

SDS-PAGE of IL1B-559R



 Tel: 1-631-559-9269 1-516-512-3133

 Email: [info@creative-biomart.com](mailto:info@creative-biomart.com)  Fax: 1-631-938-8127

 45-1 Ramsey Road, Shirley, NY 11967, USA