

Recombinant Human IL1B Protein, Myc/DDK-tagged, C13 and N15-labeled

Cat. No. IL1B-5955H **Lot. No.** (See product label)

SPECIFICATION

Product Overview	IL1B MS Standard C13 and N15-labeled recombinant protein (NP_000567) with a C-terminal MYC/DDK tag, was expressed in HEK293 cells.
Species	Human
Source	HEK293
Description	<p>The protein encoded by this gene is a member of the interleukin 1 cytokine family. This cytokine is produced by activated macrophages as a proprotein, which is proteolytically processed to its active form by caspase 1 (CASP1/ICE). This cytokine is an important mediator of the inflammatory response, and is involved in a variety of cellular activities, including cell proliferation, differentiation, and apoptosis. The induction of cyclooxygenase-2 (PTGS2/COX2) by this cytokine in the central nervous system (CNS) is found to contribute to inflammatory pain hypersensitivity. This gene and eight other interleukin 1 family genes form a cytokine gene cluster on chromosome 2.</p>
Molecular Mass	30.7 kDa
AA Sequence	<p>MAEVP ELASEMMAYYS GNEDDLFFEADGPKQM KCSFQDL DLCPLDGGIQLRISDHH YSKGFRQAASVVVAMDKLRKMLVPCPQTFQENDLSTFFPFIFEEEPFFDFTWDNEAY VHDAPVRS LNCTLRDSQQKSLVMSGPYELKALHLQGQDMEQQVVFMSFVQGEES NDKIPVALGLKEKNLYLSCVLKDDKPTLQLESVDPKNYPKKKMEKRFVFNKIEINNKL</p>

 Tel: 1-631-559-9269 1-516-512-3133

 Email: info@creative-biomart.com  Fax: 1-631-938-8127

 45-1 Ramsey Road, Shirley, NY 11967, USA

EFESAQFPNWWYISTSQAENMPVFLGGTKGGQDITDFTMQFVSSSTRTRPLEQKLISEE
DLAANDILDYKDDDDKV

Purity > 80% as determined by SDS-PAGE and Coomassie blue staining

Stability Stable for 3 months from receipt of products under proper storage and handling conditions.

Storage Store at -80 centigrade. Avoid repeated freeze-thaw cycles.

Concentration 50 µg/mL as determined by BCA

Storage Buffer 100 mM glycine, 25 mM Tris-HCl, pH 7.3.

GENE INFORMATION

Gene Name IL1B interleukin 1 beta [Homo sapiens (human)]

Official Symbol IL1B

Synonyms IL1B; interleukin 1, beta; interleukin-1 beta; IL 1B; IL1 BETA; IL1F2; IL-1 beta; catabolin; preinterleukin 1 beta; pro-interleukin-1-beta; IL-1; IL1-BETA;

Gene ID 3553

mRNA Refseq NM_000576

Protein Refseq NP_000567

MIM 147720

 Tel: 1-631-559-9269 1-516-512-3133

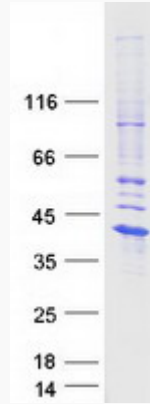
 Email: info@creative-biomart.com  Fax: 1-631-938-8127

 45-1 Ramsey Road, Shirley, NY 11967, USA

UniProt ID

P01584

SDS-PAGE



 Tel: 1-631-559-9269 1-516-512-3133

 Email: info@creative-biomart.com  Fax: 1-631-938-8127

 45-1 Ramsey Road, Shirley, NY 11967, USA