

Active Recombinant Human IL1B protein, His-tagged

Cat. No. IL1B-60H Lot. No. (See product label)

SPECIFICATION

Product Overview	Active Recombinant Human IL1B protein(P01584)(117~269 aa), fused with N-terminal His tag, was expressed in E.coli.
Species	Human
Source	E.coli
ProteinLength	117-269 aa
Form	Lyophilized from sterile 20mM Tris, 150mM NaCl, pH8.0, containing 1mM EDTA, 1mM DTT, 0.01% SKL, 5% Trehalose and Proclin300.
Bio-activity	IL-1 β (Interleukin-1 beta) is a proinflammatory and immunoregulatory cytokine involved in a variety of cellular activities. It is produced by activated macrophages as a proprotein, and then proteolytically processed to an active form. It has been reported that IL-1 β -induced IL-6 production is mediated by both PI3K and IRAK4 in A549 cells. To detect the bioactivity of IL-1 β , A549 cells were seeded into 24-well plate at a density of 1x10 ⁵ cells/mL, and allowed to attach overnight before treated with or without certain concentrations (1ng/mL, 10ng/mL) of IL1- β for 4h and IL-6 levels in the cell supernatant were determined by ELISA.
Molecular Mass	21.1kDa
Endotoxin	<1.0EU per 1 μ g (determined by the LAL method).

 Tel: 1-631-559-9269 1-516-512-3133

 Email: info@creative-biomart.com  Fax: 1-631-938-8127

 45-1 Ramsey Road, Shirley, NY 11967, USA

Purity	> 95% as determined by SDS-PAGE.
Storage	Avoid repeated freeze/thaw cycles. Store at -20°C for 12 months. Aliquot and store at -80°C for 12 months.
Reconstitution	Reconstitute in 20mM Tris, 150mM NaCl (PH8.0) to a concentration of 0.1-1.0 mg/mL. Do not vortex.

GENE INFORMATION

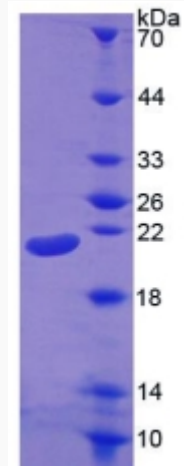
Gene Name	IL1B interleukin 1, beta [Homo sapiens]
Official Symbol	IL1B
Synonyms	IL1B; interleukin 1, beta; interleukin-1 beta; IL 1B; IL1 BETA; IL1F2; IL-1 beta; catabolin; preinterleukin 1 beta; pro-interleukin-1-beta; IL-1; IL1-BETA;
Gene ID	3553
mRNA Refseq	NM_000576
Protein Refseq	NP_000567
MIM	147720
UniProt ID	P01584

 Tel: 1-631-559-9269 1-516-512-3133

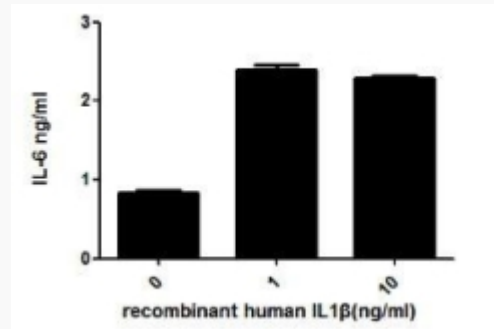
 Email: info@creative-biomart.com  Fax: 1-631-938-8127

 45-1 Ramsey Road, Shirley, NY 11967, USA

SDS-PAGE



Activity



 Tel: 1-631-559-9269 1-516-512-3133

 Email: info@creative-biomart.com  Fax: 1-631-938-8127

 45-1 Ramsey Road, Shirley, NY 11967, USA