

Recombinant Human IL1B protein, His-Avi-tagged

Cat. No. IL1B-6353H Lot. No. (See product label)

SPECIFICATION

Product Overview	Recombinant Human IL1B protein(P01584)(Ala117-Ser269), fused with C-terminal His and Avi tag, was expressed in E.coli.
Species	Human
Source	E.coli
ProteinLength	Ala117-Ser269
Tag	C-His-Avi
Form	Lyophilized from 0.22µm filtered solution in PBS (pH 7.4). Normally 5% trehalose is added as protectant before lyophilization.
Bio-activity	Immobilized Human IL-1 Beta, His Tag at 5µg/ml (100µl/Well) on the plate. Dose response curve for Human IL-1R2, hFc Tag with the EC50 of 0.12µg/ml determined by ELISA.
Molecular Mass	The protein has a predicted MW of 20.1 kDa same as Tris-Bis PAGE result.
Endotoxin	Less than 1EU per µg by the LAL method.
Purity	> 95% as determined by Tris-Bis PAGE; > 95% as determined by SEC-HPLC
Storage	Reconstituted protein stable at -80°C for 12 months, 4°C for 1 week. Use a manual

 Tel: 1-631-559-9269 1-516-512-3133

 Email: info@creative-biomart.com  Fax: 1-631-938-8127

 45-1 Ramsey Road, Shirley, NY 11967, USA

defrost freezer and avoid repeated freeze-thaw cycles.

Reconstitution

Centrifuge tubes before opening. Reconstituting to a concentration more than 100 µg/ml is recommended. Dissolve the lyophilized protein in distilled water.

GENE INFORMATION

Gene Name IL1B interleukin 1, beta [Homo sapiens]

Official Symbol IL1B

Synonyms IL1B; interleukin 1, beta; interleukin-1 beta; IL 1B; IL1 BETA; IL1F2; IL-1 beta; catabolin; preinterleukin 1 beta; pro-interleukin-1-beta; IL-1; IL1-BETA;

Gene ID 3553

mRNA Refseq NM_000576

Protein Refseq NP_000567

MIM 147720

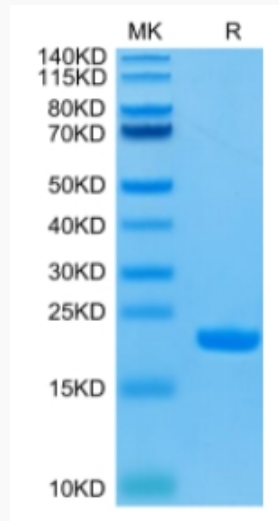
UniProt ID P01584

 Tel: 1-631-559-9269 1-516-512-3133

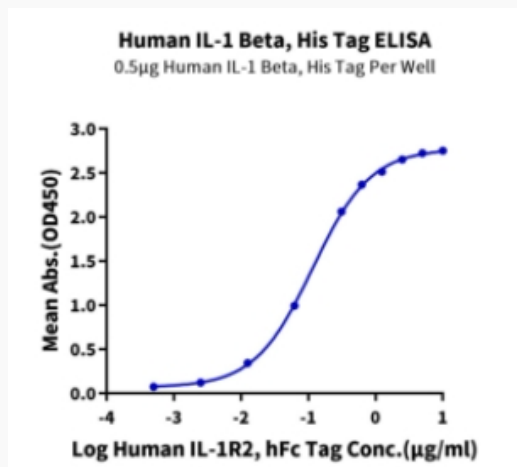
 Email: info@creative-biomart.com  Fax: 1-631-938-8127

 45-1 Ramsey Road, Shirley, NY 11967, USA

Tris-Bis PAGE



ELISA Data



 Tel: 1-631-559-9269 1-516-512-3133

 Email: info@creative-biomart.com  Fax: 1-631-938-8127

 45-1 Ramsey Road, Shirley, NY 11967, USA