

Active Recombinant Human IL1B protein, His-tagged

Cat. No. IL1B-744H Lot. No. (See product label)

SPECIFICATION

Product Overview	Active Recombinant Human IL1B protein(NP_000567.1) (Met 1-Ser 269) was expressed in E.coli, fused with a polyhistidine tag at the N-terminus.
Species	Human
Source	E.coli
ProteinLength	1-269 aa
Form	Lyophilized from sterile PBS, pH 7.4.
Bio-activity	Measured by its binding ability in a functional ELISA. Immobilized human IL1B at 10 µg/mL (100 µl/well) can bind human IL1R1. The EC50 of human IL1R1 is 0.198 µg/mL.
Molecular Mass	The recombinant pro form of human IL1β consisting of 280 amino acids and has a calculated molecular mass of 32.3 kDa. It migrates as an approximately 34 kDa band in SDS-PAGE under reducing conditions.
Purity	> 95 % as determined by SDS-PAGE
Storage	Store it under sterile conditions at -20°C to -80°C upon receiving. Recommend to aliquot the protein into smaller quantities for optimal storage. Avoid repeated freeze-thaw cycles.

 Tel: 1-631-559-9269 1-516-512-3133

 Email: info@creative-biomart.com  Fax: 1-631-938-8127

 45-1 Ramsey Road, Shirley, NY 11967, USA

Reconstitution It is recommended that sterile water be added to the vial to prepare a stock solution of 0.2 ug/ul. Centrifuge the vial at 4°C before opening to recover the entire contents.

GENE INFORMATION

Gene Name IL1B interleukin 1, beta [Homo sapiens]

Official Symbol IL1B

Synonyms IL1B; interleukin 1, beta; interleukin-1 beta; IL 1B; IL1 BETA; IL1F2; IL-1 beta; catabolin; preinterleukin 1 beta; pro-interleukin-1-beta; IL-1; IL1-BETA;

Gene ID 3553

mRNA Refseq NM_000576

Protein Refseq NP_000567

MIM 147720

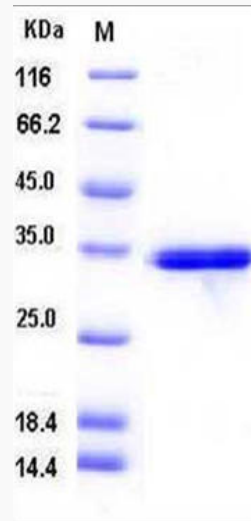
UniProt ID P01584

 Tel: 1-631-559-9269 1-516-512-3133

 Email: info@creative-biomart.com  Fax: 1-631-938-8127

 45-1 Ramsey Road, Shirley, NY 11967, USA

SDS-PAGE



 Tel: 1-631-559-9269 1-516-512-3133

 Email: info@creative-biomart.com  Fax: 1-631-938-8127

 45-1 Ramsey Road, Shirley, NY 11967, USA