

Recombinant Human IL1F10 Protein

Cat. No. IL1F10-109H **Lot. No.** (See product label)

SPECIFICATION

Product Overview	Recombinant Human Interleukin-1 Family Member 10 is produced by our E.coli expression system and the target gene encoding Met1-Trp152 is expressed.
Species	Human
Source	E.coli
ProteinLength	1-152 a.a.
Description	Human Interleukin 1 Family Member 10 (IL-1F10) is thought to participate in a network of Interleukin 1 cytokine family members to regulate adapted and innate immune responses. IL-1F10 was expressed in fetal skin, spleen and tonsil, mostly in the basal epithelia of skin and in proliferating B-cells of the tonsil. IL-1F10 binds soluble IL-1 receptor type 1 and may be implicated in regulating adapted and innate immune responses. Two alternatively spliced transcript variants encoding the same protein have been reported.
Form	Lyophilized from a 0.2 um filtered solution of 20mM PB, 150mM NaCl, pH 6.0.
Molecular Mass	Predicted Molecular Weight: 16.9kDa Apparent Molecular Weight: 17kDa, reducing conditions.
AA Sequence	Met1-Trp152
Endotoxin	Less than 0.1 ng/ug (1 EU/ug).

 Tel: 1-631-559-9269 1-516-512-3133

 Email: info@creative-biomart.com  Fax: 1-631-938-8127

 45-1 Ramsey Road, Shirley, NY 11967, USA

Purity	>95%
Storage	<p>Lyophilized protein should be stored at < -20 centigrade, though stable at room temperature for 3 weeks.</p> <p>Reconstituted protein solution can be stored at 4-7 centigrade for 2-7 days.</p> <p>Aliquots of reconstituted samples are stable at < -20 centigrade for 3 months.</p>
Reconstitution	<p>Always centrifuge tubes before opening. Do not mix by vortex or pipetting.</p> <p>It is not recommended to reconstitute to a concentration less than 100µg/ml.</p> <p>Dissolve the lyophilized protein in distilled water.</p> <p>Please aliquot the reconstituted solution to minimize freeze-thaw cycles.</p>
Quality Statement	Purity Greater than 95% as determined by reducing SDS-PAGE.
Shipping	<p>The product is shipped at ambient temperature.</p> <p>Upon receipt, store it immediately at the temperature listed below.</p>

GENE INFORMATION

Gene Name	IL1F10 interleukin 1 family member 10 [Homo sapiens (human)]
Official Symbol	IL1F10
Synonyms	Interleukin-1 Family Member 10; IL-1F10; FIL1 Theta; Interleukin-1 HY2; Interleukin-1 Theta; IL-1 Theta; IL1F10; FIL1T; IL-38; FKSG75; IL1HY2; IL-1HY2; FIL1-theta
Gene ID	84639
mRNA Refseq	NM_032556.6
Protein Refseq	NP_115945.4

 Tel: 1-631-559-9269 1-516-512-3133

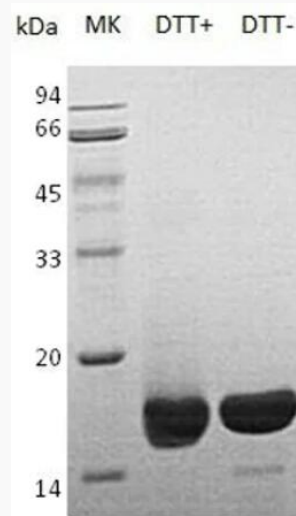
 Email: info@creative-biomart.com  Fax: 1-631-938-8127

 45-1 Ramsey Road, Shirley, NY 11967, USA

MIM 615296

UniProt ID Q8WWZ1

SDS-PAGE



 Tel: 1-631-559-9269 1-516-512-3133

 Email: info@creative-biomart.com  Fax: 1-631-938-8127

 45-1 Ramsey Road, Shirley, NY 11967, USA