

Recombinant Human IL1F10 protein, His-tagged

Cat. No. IL1F10-187H Lot. No. (See product label)

SPECIFICATION

Product Overview	Recombinant Human IL1F10 protein(AAK68048.1) (Met1-Trp152) was expressed in Yeast with a polyhistidine tag at the C-terminus.
Species	Human
Source	Yeast
ProteinLength	1-152 aa
Form	Lyophilized from sterile PBS, pH 7.4.
Molecular Mass	The recombinant human IL1F10 consists 162 amino acids and predicts a molecular mass of 18.4 kDa.
Purity	> 90 % as determined by SDS-PAGE
Storage	Store it under sterile conditions at -20°C to -80°C upon receiving. Recommend to aliquot the protein into smaller quantities for optimal storage. Avoid repeated freeze-thaw cycles.
Reconstitution	It is recommended that sterile water be added to the vial to prepare a stock solution of 0.2 ug/ul. Centrifuge the vial at 4°C before opening to recover the entire contents.

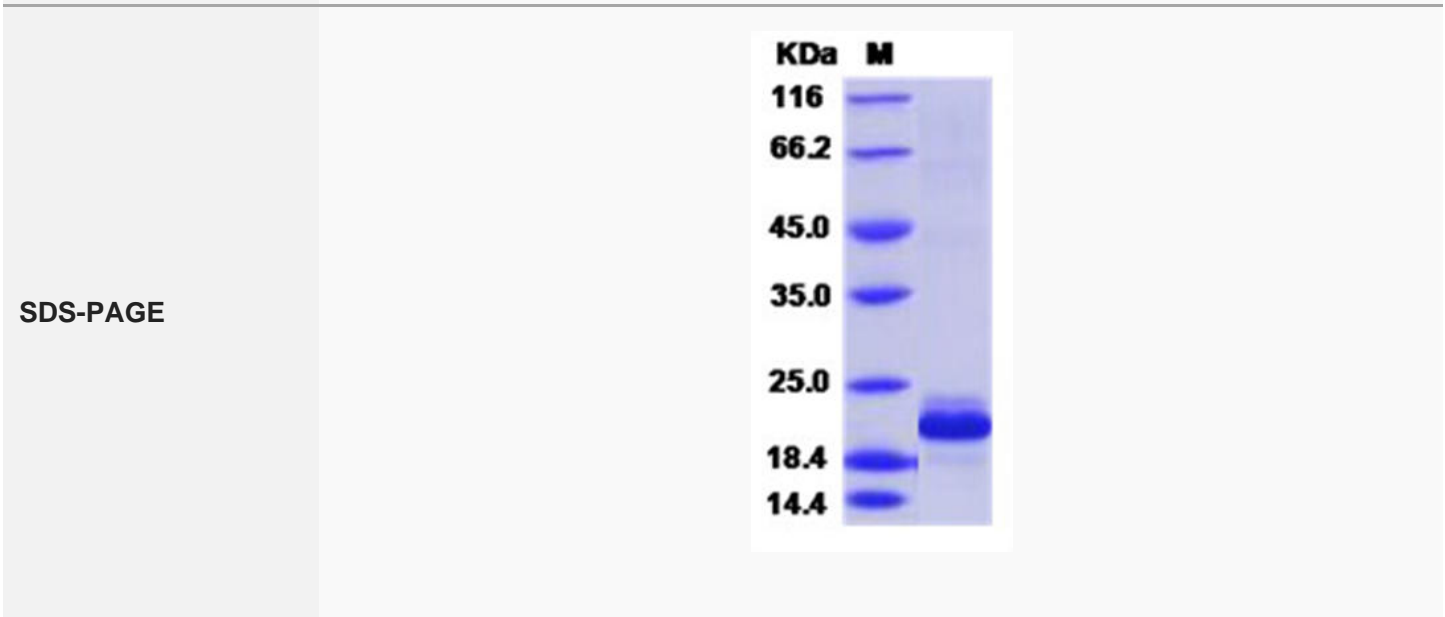
GENE INFORMATION

 Tel: 1-631-559-9269 1-516-512-3133

 Email: info@creative-biomart.com  Fax: 1-631-938-8127

 45-1 Ramsey Road, Shirley, NY 11967, USA

Gene Name	IL1F10 interleukin 1 family, member 10 (theta) [Homo sapiens]
Official Symbol	IL1F10
Synonyms	IL1F10; interleukin 1 family, member 10 (theta); interleukin-1 family member 10; FIL1 theta; FKSG75; IL 1F10; IL 1HY2; IL1 theta; interleukin 1 receptor antagonist FKSG75; MGC11983; MGC119832; MGC119833; FIL1 theta; IL-1 theta; interleukin-1 HY2; interleukin-1 theta; IL-1F10 (canonical form IL-1F10a); interleukin-1 receptor antagonist FKSG75; interleukin-1 receptor antagonist-like FIL1 theta; IL-1HY2; IL1-theta; FIL1-theta; MGC119831;
Gene ID	84639
mRNA Refseq	NM_032556
Protein Refseq	NP_115945
UniProt ID	Q8WWZ1



Tel: 1-631-559-9269 1-516-512-3133

Email: info@creative-biomart.com Fax: 1-631-938-8127

45-1 Ramsey Road, Shirley, NY 11967, USA