

Recombinant Human IL1F10 Protein, Myc/DDK-tagged, C13 and N15-labeled

Cat. No. IL1F10-669H **Lot. No.** (See product label)

SPECIFICATION

Product Overview	IL1F10 MS Standard C13 and N15-labeled recombinant protein (NP_115945) with a C-terminal MYC/DDK tag, was expressed in HEK293 cells.
Species	Human
Source	HEK293
Description	The protein encoded by this gene is a member of the interleukin 1 cytokine family. This gene and eight other interleukin 1 family genes form a cytokine gene cluster on chromosome 2. This cytokine is thought to participate in a network of interleukin 1 family members to regulate adapted and innate immune responses. Two alternatively spliced transcript variants encoding the same protein have been reported.
Molecular Mass	17 kDa
AA Sequence	MCSLPMARYYIIKYADQKALYTRDGQLLVGDPVADNCCAEEKICTLPNRLDRTKVPIL LGIQGGSRCLACVETEEGPSLQLEDVNIEELYKGGEEATRFTFFQSSSGSAFRLEAA AWPGWFLCGPAEPQQPVQLTKESEPSARTKIFYFEQSWTRTRPLEQKLISEEDLAAN DILDYKDDDDKV
Purity	> 80% as determined by SDS-PAGE and Coomassie blue staining
Stability	Stable for 3 months from receipt of products under proper storage and handling conditions.

 Tel: 1-631-559-9269 1-516-512-3133

 Email: info@creative-biomart.com  Fax: 1-631-938-8127

 45-1 Ramsey Road, Shirley, NY 11967, USA

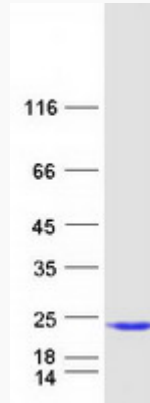
Storage	Store at -80 centigrade. Avoid repeated freeze-thaw cycles.
Concentration	50 µg/mL as determined by BCA
Storage Buffer	100 mM glycine, 25 mM Tris-HCl, pH 7.3.
GENE INFORMATION	
Gene Name	IL1F10 interleukin 1 family member 10 [Homo sapiens (human)]
Official Symbol	IL1F10
Synonyms	IL1F10; interleukin 1 family, member 10 (theta); interleukin-1 family member 10; FIL1 theta; FKSG75; IL 1F10; IL 1HY2; IL1 theta; interleukin 1 receptor antagonist FKSG75; MGC11983; MGC119832; MGC119833; FIL1 theta; IL-1 theta; interleukin-1 HY2; interleukin-1 theta; IL-1F10 (canonical form IL-1F10a); interleukin-1 receptor antagonist FKSG75; interleukin-1 receptor antagonist-like FIL1 theta; IL-1HY2; IL1-theta; FIL1-theta; MGC119831;
Gene ID	84639
mRNA Refseq	NM_032556
Protein Refseq	NP_115945
MIM	615296
UniProt ID	Q8WWZ1

 Tel: 1-631-559-9269 1-516-512-3133

 Email: info@creative-biomart.com  Fax: 1-631-938-8127

 45-1 Ramsey Road, Shirley, NY 11967, USA

SDS-PAGE



 Tel: 1-631-559-9269 1-516-512-3133

 Email: info@creative-biomart.com  Fax: 1-631-938-8127

 45-1 Ramsey Road, Shirley, NY 11967, USA