

Active Recombinant Human IL1R1 Protein (19-328aa), C-His-tagged

Cat. No. IL1R1-02H Lot. No. (See product label)

SPECIFICATION

Product Overview	Recombinant human IL1RL1 (19-328aa), fused to His-tag at C-terminus, was expressed in insect cell and purified by using conventional chromatography techniques.
Species	Human
Source	Insect Cells
ProteinLength	19-328
Description	The protein encoded by this gene is a member of the interleukin 1 receptor family. Studies of the similar gene in mouse suggested that this receptor can be induced by proinflammatory stimuli, and may be involved in the function of helper T cells. This gene, interleukin 1 receptor, type I (IL1R1), interleukin 1 receptor, type II (IL1R2) and interleukin 1 receptor-like 2 (IL1RL2) form a cytokine receptor gene cluster in a region mapped to chromosome 2q12. Alternative splicing of this gene results in multiple transcript variants.
Form	Liquid
Bio-activity	Measured by its ability to inhibit proliferation using D10.G4.1 mouse helper T cells. The ED50 range ≤ 10 ng/mL with Human IL-33.
Molecular Mass	36 kDa (318aa)

 Tel: 1-631-559-9269 1-516-512-3133

 Email: info@creative-biomart.com  Fax: 1-631-938-8127

 45-1 Ramsey Road, Shirley, NY 11967, USA

AA Sequence	KFSKQSWGLENEALIVRCPRQGKPSYTVDWYYSQTNKSIPTQERNRVFASGQLLKF LPAAVADSGIYTCIVRSPTFNRTGYANVTIYKKQSDCNVPDYLMYSTVSGSEKNSKIY CPTIDLYNWTAPLEWFKNCQALQGSRYRAHKSFLVIDNVMTEDAGDYTCKFIHNEN GANYSVTATRSFTVKDEQGFSLFPVIGAPAQNEIKEVEIGKNANLTCSACFGKGTQF LAAVLWQLNGTKITDFGEPRIQQEEGQNQSFSNGLACLDMVLRIADVKEEDLLLQYD CLALNLHGLRRHTVRLSRKNPIDHHS
Endotoxin	< 1 EU/μg of protein (determined by LAL method)
Purity	> 95% by SDS-PAGE
Applications	SDS-PAGE, Bioactivity
Storage	Can be stored at +2 to +8 centigrade for 1 week. For long term storage, aliquot and store at -20 to -80 centigrade. Avoid repeated freezing and thawing cycles.
Concentration	0.5 mg/mL (determined by absorbance at 280nm)
Storage Buffer	Phosphate-Buffered Saline (pH 7.4) containing 10% glycerol

GENE INFORMATION

Gene Name	IL1RL1 interleukin 1 receptor like 1 [Homo sapiens (human)]
Official Symbol	IL1RL1
Synonyms	IL1RL1; interleukin 1 receptor like 1; T1; ST2; DER4; ST2L; ST2V; FIT-1; IL33R; interleukin-1 receptor-like 1; growth stimulation-expressed; homolog of mouse growth stimulation-expressed; interleukin 1 receptor-related protein; EC 3.2.2.6
Gene ID	9173

 Tel: 1-631-559-9269 1-516-512-3133

 Email: info@creative-biomart.com  Fax: 1-631-938-8127

 45-1 Ramsey Road, Shirley, NY 11967, USA

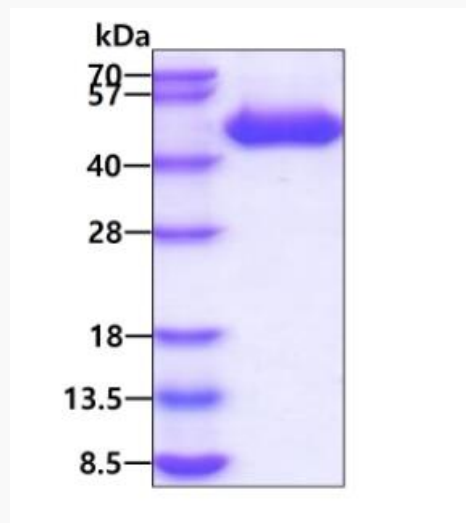
mRNA Refseq [NM_016232](#)

Protein Refseq [NP_057316](#)

MIM [601203](#)

UniProt ID [Q01638](#)

SDS-PAGE



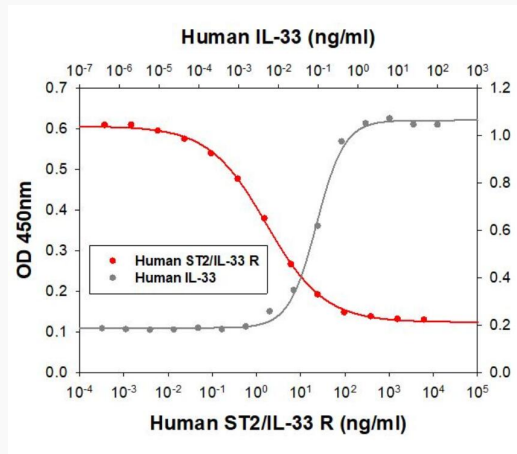
3 μ g by SDS-PAGE under reducing condition and visualized by coomassie blue stain.

 Tel: 1-631-559-9269 1-516-512-3133

 Email: info@creative-biomart.com  Fax: 1-631-938-8127

 45-1 Ramsey Road, Shirley, NY 11967, USA

Biological Activity



Measured by its ability to inhibit proliferation using D10.G4.1 mouse helper T cells.
The ED50 range ≤ 10 ng/mL with Human IL-33.

 Tel: 1-631-559-9269 1-516-512-3133

 Email: info@creative-biomart.com  Fax: 1-631-938-8127

 45-1 Ramsey Road, Shirley, NY 11967, USA