

Recombinant Human IL1R1 Protein (Met1-Thr332), C-Fc tagged

Cat. No. IL1R1-4266H Lot. No. (See product label)

SPECIFICATION

Product Overview	Recombinant human IL1R1 (Met1~Thr332) fused with the C-terminal Fc tag was expressed in mammalian cells.
Species	Human
Source	Mammalian Cells
ProteinLength	Met1-Thr332
Form	Lyophilized powder/frozen liquid
Molecular Mass	64.3 kDa
Endotoxin	< 1.0 EU/μg of the protein as determined by the LAL method.
Purity	>90% as determined by SDS-PAGE.
Notes	For research use only.
Storage	Use a manual defrost freezer and avoid repeated freeze thaw cycles. Store at 2 to 8 centigrade for one week. Store at -20 to -80 centigrade for twelve months from the date of receipt.
Storage Buffer	Supplied as solution form in PBS, pH 7.5 or lyophilized from PBS, pH 7.5.

 Tel: 1-631-559-9269 1-516-512-3133

 Email: info@creative-biomart.com  Fax: 1-631-938-8127

 45-1 Ramsey Road, Shirley, NY 11967, USA

Reconstitution Reconstitute in sterile water for a stock solution.

Shipping They are shipped out with dry ice/blue ice unless customers require otherwise.

GENE INFORMATION

Gene Name [IL1R1 interleukin 1 receptor, type I \[Homo sapiens \(human\) \]](#)

Official Symbol [IL1R1](#)

Synonyms

IL1R1; interleukin 1 receptor, type I; IL1R, IL1RA; interleukin-1 receptor type 1; CD121A; D2S1473; IL-1R-1; IL-1RT1; IL-1RT-1; antigen CD121a; interleukin receptor 1; interleukin-1 receptor alpha; interleukin-1 receptor type I; CD121 antigen-like family member A; interleukin 1 receptor alpha, type I; P80; IL1R; IL1RA; IL-1R-alpha;

Gene ID [3554](#)

mRNA Refseq [NM_000877](#)

Protein Refseq [NP_000868](#)

MIM [147810](#)

UniProt ID [P14778](#)

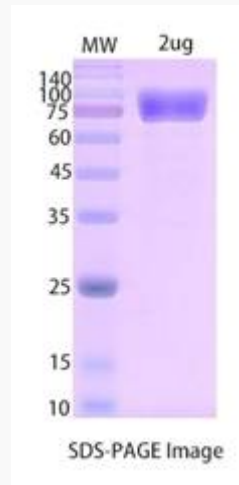
 Tel: 1-631-559-9269 1-516-512-3133

 Email: info@creative-biomart.com  Fax: 1-631-938-8127

 45-1 Ramsey Road, Shirley, NY 11967, USA



SDS-PAGE



Tel: 1-631-559-9269 1-516-512-3133

Email: info@creative-biomart.com Fax: 1-631-938-8127

45-1 Ramsey Road, Shirley, NY 11967, USA