

Active Recombinant Human IL1R1 protein, His-tagged

Cat. No. IL1R1-552H Lot. No. (See product label)

SPECIFICATION

Product Overview Active Recombinant Human IL1R1 protein(P14778)(21~109 aa), fused with N-terminal His tag, was expressed in E.coli.

Species Human

Source E.coli

ProteinLength 21-109 aa

Form Lyophilized from sterile 20mM Tris, 150mM NaCl, pH8.0, containing 1mM EDTA, 1mM DTT, 0.01% SKL, 5% Trehalose and Proclin300.

Bio-activity IL1R1 (Interleukin 1 Receptor Type I), also known as CD121a, is an important mediator involved in many cytokine induced immune and inflammatory responses. It belongs to the interleukin-1 receptor family, and is a receptor for interleukin 1 alpha (IL1a), interleukin 1 beta (IL1B), and interleukin 1 receptor antagonist (IL1RA). Thus, a binding ELISA assay was conducted to detect the association of IL1R1 with IL1a. Briefly, IL1R1 were diluted serially in PBS with 0.01%BSA (pH 7.4). Duplicate samples of 100uL were then transferred to IL1a-coated microtiter wells and incubated for 2h at 37°C. Wells were washed with PBST and incubated for 1h with anti-IL1R1 pAb, then aspirated and washed 3 times. After incubation with HRP labelled secondary antibody, wells were aspirated and washed 3 times. With the addition of substrate solution, wells were incubated 15-25 minutes at 37°C. Finally, add 50μ stop solution to the wells and read at 450nm immediately. The binding activity of IL1R1

 Tel: 1-631-559-9269 1-516-512-3133

 Email: info@creative-biomart.com  Fax: 1-631-938-8127

 45-1 Ramsey Road, Shirley, NY 11967, USA

with IL1a was shown and this effect was in a dose dependent manner.

Molecular Mass	11.6kDa
Purity	> 95% as determined by SDS-PAGE.
Storage	Avoid repeated freeze/thaw cycles. Store at -20°C for 12 months. Aliquot and store at -80°C for 12 months.
Reconstitution	Reconstitute in 20mM Tris, 150mM NaCl (pH8.0) to a concentration of 0.1-1.0 mg/mL. Do not vortex.

GENE INFORMATION

Gene Name	IL1R1 interleukin 1 receptor, type I [Homo sapiens]
Official Symbol	IL1R1
Synonyms	IL1R1; interleukin 1 receptor, type I; IL1R, IL1RA; interleukin-1 receptor type 1; CD121A; D2S1473; IL-1R-1; IL-1RT1; IL-1RT-1; antigen CD121a; interleukin receptor 1; interleukin-1 receptor alpha; interleukin-1 receptor type I; CD121 antigen-like family member A; interleukin 1 receptor alpha, type I; P80; IL1R; IL1RA; IL-1R-alpha;
Gene ID	3554
mRNA Refseq	NM_000877
Protein Refseq	NP_000868
MIM	147810

 Tel: 1-631-559-9269 1-516-512-3133

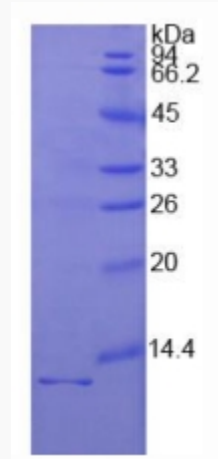
 Email: info@creative-biomart.com  Fax: 1-631-938-8127

 45-1 Ramsey Road, Shirley, NY 11967, USA

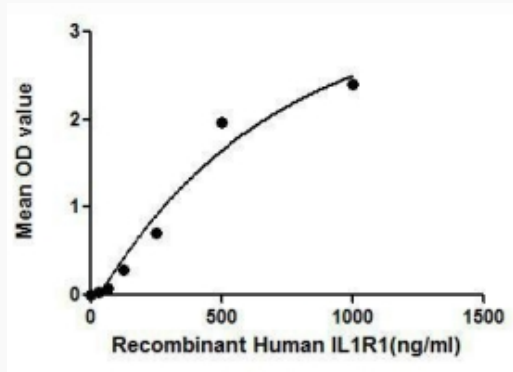
UniProt ID

P14778

SDS-PAGE



Activity



 Tel: 1-631-559-9269 1-516-512-3133

 Email: info@creative-biomart.com  Fax: 1-631-938-8127

 45-1 Ramsey Road, Shirley, NY 11967, USA