

Active Recombinant Human IL1R1 protein, hFc-tagged

Cat. No. IL1R1-771H Lot. No. (See product label)

SPECIFICATION

Product Overview	Active Recombinant Human IL1R1 protein(NP_000868.1) (Met 1-Thr 332) was expressed in Human Cells, fused with human IgG1 Fc region at the C-terminus.
Species	Human
Source	Human Cells
ProteinLength	1-332 aa
Form	Lyophilized from sterile PBS, pH 7.4.
Bio-activity	1. Measured by its binding ability in a functional ELISA. Immobilized human IL1-beta at 20 µg/ml (100 µl/well) can bind human IL1R1 Fc chimera with a linear ranger of 6.4-160 ng/ml. 2. Measured by its binding ability in a functional ELISA. 3. Immobilized human IL1B-his at 10 µg/mL (100 µl/well) can bind human IL1R1-Fc. The EC50 of human IL1R1-Fc is 0.198 µg/mL. 4. Immobilized human IL1B at 10 µg/mL (100 µl/well) can bind human IL1R1-Fc. The EC50 of human IL1R1-Fc is 0.48 µg/mL. 5. Measured by its ability to bind canine IL1B in a functional ELISA. 6. Measured by its ability to bind mouse IL1B in a functional ELISA.
Molecular Mass	The recombinant human IL1R1/Fc chimera is a disulfide-linked homodimer. The reduced monomer consists of 553 amino acids after removal of the signal peptide and has a predicted molecular mass of 63 kDa. In SDS-PAGE under reducing conditions, it migrates with an apparent molecular mass of 80-90 kDa due to glycosylation.

 Tel: 1-631-559-9269 1-516-512-3133

 Email: info@creative-biomart.com  Fax: 1-631-938-8127

 45-1 Ramsey Road, Shirley, NY 11967, USA

Endotoxin	< 1.0 EU per µg of the protein as determined by the LAL method.
Purity	> 90 % as determined by SDS-PAGE
Storage	Store it under sterile conditions at -20°C to -80°C upon receiving. Recommend to aliquot the protein into smaller quantities for optimal storage. Avoid repeated freeze-thaw cycles.
Reconstitution	It is recommended that sterile water be added to the vial to prepare a stock solution of 0.2 ug/ul. Centrifuge the vial at 4°C before opening to recover the entire contents.

GENE INFORMATION

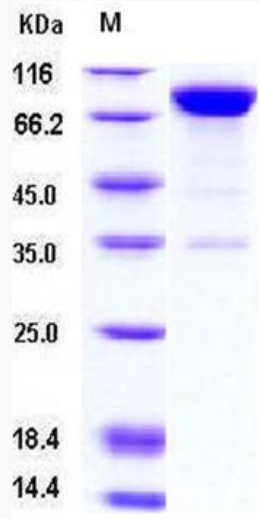
Gene Name	IL1R1 interleukin 1 receptor, type I [Homo sapiens]
Official Symbol	IL1R1
Synonyms	IL1R1; interleukin 1 receptor, type I; IL1R, IL1RA; interleukin-1 receptor type 1; CD121A; D2S1473; IL-1R-1; IL-1RT1; IL-1RT-1; antigen CD121a; interleukin receptor 1; interleukin-1 receptor alpha; interleukin-1 receptor type I; CD121 antigen-like family member A; interleukin 1 receptor alpha, type I; P80; IL1R; IL1RA; IL-1R-alpha;
Gene ID	3554
mRNA Refseq	NM_000877
Protein Refseq	NP_000868
MIM	147810
UniProt ID	P14778

 Tel: 1-631-559-9269 1-516-512-3133

 Email: info@creative-biomart.com  Fax: 1-631-938-8127

 45-1 Ramsey Road, Shirley, NY 11967, USA

SDS-PAGE



 Tel: 1-631-559-9269 1-516-512-3133

 Email: info@creative-biomart.com  Fax: 1-631-938-8127

 45-1 Ramsey Road, Shirley, NY 11967, USA