

Active Recombinant Human IL1R1, His tagged

Cat. No. IL1R1-772H **Lot. No.** (See product label)

SPECIFICATION

Product Overview	Active Recombinant Human IL1R1(NP_000868.1)(Leu18-Thr332) is expressed from HEK293 with His tag at the C-Terminus.
Species	Human
Source	HEK293
ProteinLength	18-332 aa
Form	Lyophilized from 0.22µm filtered solution in PBS (pH 7.4).
Bio-activity	Immobilized Human IL-1R1, His Tag at 5µg/ml (100µl/well) on the plate. Dose response curve for Biotinylated Human IL-1 Beta, His Tag with the EC50 of 58.8ng/ml determined by ELISA.
Molecular Mass	The protein has a predicted MW of 37 kDa. Due to glycosylation, the protein migrates to 55-68 kDa based on Bis-Tris PAGE result.
Endotoxin	Less than 1 EU per µg by the LAL method.
Purity	> 95% as determined by Bis-Tris PAGE > 95% as determined by HPLC
Storage	-20 to -80°C for 12 months as supplied from date of receipt. -80°C for 3 months after reconstitution. Recommend to aliquot the protein into smaller quantities for optimal storage. Please minimize freeze-thaw cycles.

 Tel: 1-631-559-9269 1-516-512-3133

 Email: info@creative-biomart.com  Fax: 1-631-938-8127

 45-1 Ramsey Road, Shirley, NY 11967, USA

Reconstitution Dissolve the lyophilized protein in distilled water.

GENE INFORMATION

Gene Name IL1R1 interleukin 1 receptor, type I [Homo sapiens]

Official Symbol IL1R1

Synonyms IL1R1; interleukin 1 receptor, type I; IL1R, IL1RA; interleukin-1 receptor type 1; CD121A; D2S1473; IL-1R-1; IL-1RT1; IL-1RT-1; antigen CD121a; interleukin receptor 1; interleukin-1 receptor alpha; interleukin-1 receptor type I; CD121 antigen-like family member A; interleukin 1 receptor alpha, type I; P80; IL1R; IL1RA; IL-1R-alpha;

Gene ID 3554

mRNA Refseq NM_000877

Protein Refseq NP_000868

MIM 147810

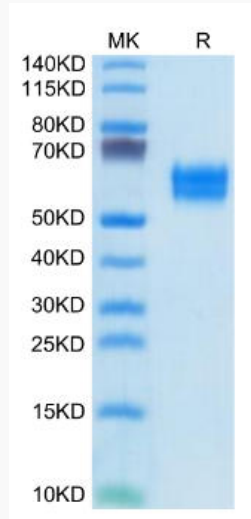
UniProt ID P14778

 Tel: 1-631-559-9269 1-516-512-3133

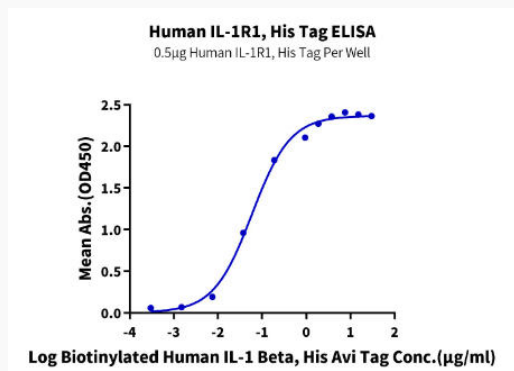
 Email: info@creative-biomart.com  Fax: 1-631-938-8127

 45-1 Ramsey Road, Shirley, NY 11967, USA

Bis-Tris PAGE



ELISA Data



 Tel: 1-631-559-9269 1-516-512-3133

 Email: info@creative-biomart.com  Fax: 1-631-938-8127

 45-1 Ramsey Road, Shirley, NY 11967, USA