

Recombinant Human IL1R1 protein, His-tagged

Cat. No. IL1R1-879H **Lot. No.** (See product label)

SPECIFICATION

Product Overview	Recombinant Human IL1R1 aa. (Pro226~His318 (Accession # P14778)) fused with N-terminal His tag was produced in E. coli cells.
Species	Human
Source	E.coli
ProteinLength	Pro226~His318
Description	This gene encodes a cytokine receptor that belongs to the interleukin-1 receptor family. The encoded protein is a receptor for interleukin-1 alpha, interleukin-1 beta, and interleukin-1 receptor antagonist. It is an important mediator involved in many cytokine-induced immune and inflammatory responses. This gene is located in a cluster of related cytokine receptor genes on chromosome 2q12.
Form	Freeze-dried powder
Molecular Mass	Predicted Molecular Mass: 12.1kDa
Endotoxin	<1.0EU per 1g (determined by the LAL method)
Purity	> 95%
Characteristic	The isoelectric point is 5.5.

 Tel: 1-631-559-9269 1-516-512-3133

 Email: info@creative-biomart.com  Fax: 1-631-938-8127

 45-1 Ramsey Road, Shirley, NY 11967, USA

Applications	SDS-PAGE; WB; ELISA; IP
Stability	The thermal stability is described by the loss rate. The loss rate was determined by accelerated thermal degradation test, that is, incubate the protein at 37°C for 48h, and no obvious degradation and precipitation were observed. The loss rate is less than 5% within the expiration date under appropriate storage condition.
Storage	Avoid repeated freeze/thaw cycles. Store at 2-8°C for one month. Aliquot and store at -80°C for 12 months.
Storage buffer	Supplied as lyophilized form in PBS, pH7.4, containing 5% trehalose, 0.01% sarcosyl
Reconstitution	Reconstitute in sterile PBS, pH7.2-pH7.4

GENE INFORMATION

Gene Name	IL1R1 interleukin 1 receptor type 1 [Homo sapiens (human)]
Official Symbol	IL1R1
Synonyms	IL1R1; interleukin 1 receptor type 1; P80; IL1R; IL1RA; CD121A; D2S1473; IL-1R-alpha; interleukin-1 receptor type 1; CD121 antigen-like family member A; IL-1R-1; IL-1RT-1; IL-1RT1; interleukin 1 receptor alpha, type I; interleukin-1 receptor alpha; interleukin-1 receptor type I
Gene ID	3554
mRNA Refseq	NM_000877.3
Protein Refseq	NP_000868.1

 Tel: 1-631-559-9269 1-516-512-3133

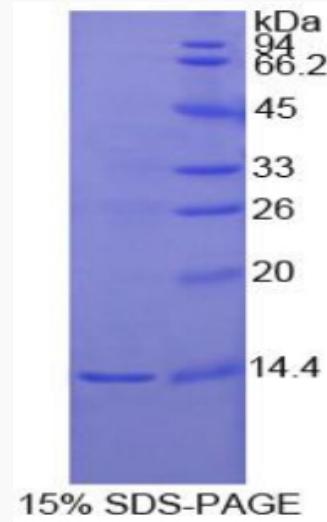
 Email: info@creative-biomart.com  Fax: 1-631-938-8127

 45-1 Ramsey Road, Shirley, NY 11967, USA

UniProt ID

P14778

SDS-PAGE



 Tel: 1-631-559-9269 1-516-512-3133

 Email: info@creative-biomart.com  Fax: 1-631-938-8127

 45-1 Ramsey Road, Shirley, NY 11967, USA