

Active Recombinant Human IL1R2 protein

Cat. No. IL1R2-1035H Lot. No. (See product label)

SPECIFICATION

Product Overview	Active Recombinant Human IL1R2 protein(NP_004624.1)(Phe14-Glu343) is expressed from HEK293 without tag.
Species	Human
Source	HEK293
ProteinLength	14-343 aa
Form	Lyophilized from 0.22 µm filtered solution in PBS (pH 7.4).
Bio-activity	Immobilized Human IL-1R2, No Tag at 5µg/ml (100µl/well) on the plate. Dose response curve for Biotinylated Human IL-1 Beta, His Tag with the EC50 of 0.31µg/ml determined by ELISA.
Molecular Mass	The protein has a predicted MW of 37.78 kDa. Due to glycosylation, the protein migrates to 50-70 kDa based on Bis-Tris PAGE result.
Endotoxin	Less than 1 EU per µg by the LAL method.
Purity	> 95% as determined by Bis-Tris PAGE > 95% as determined by HPLC
Storage	-20 to -80°C for 12 months as supplied from date of receipt. -80°C for 3 months after reconstitution. Recommend to aliquot the protein into smaller quantities for optimal storage. Please minimize freeze-thaw cycles.

 Tel: 1-631-559-9269 1-516-512-3133

 Email: info@creative-biomart.com  Fax: 1-631-938-8127

 45-1 Ramsey Road, Shirley, NY 11967, USA

Reconstitution Dissolve the lyophilized protein in distilled water.

GENE INFORMATION

Gene Name [IL1R2 interleukin 1 receptor, type II \[Homo sapiens \]](#)

Official Symbol [IL1R2](#)

Synonyms IL1R2; interleukin 1 receptor, type II; IL1RB; interleukin-1 receptor type 2; CD121b; CDw121b; IL-1R-2; IL-1RT2; IL-1RT-2; IL-1R-beta; antigen CDw121b; IL-1 type II receptor; interleukin-1 receptor beta; interleukin-1 receptor type II; CD121 antigen-like family member B; type II interleukin-1 receptor, beta; MGC47725;

Gene ID [7850](#)

mRNA Refseq [NM_004633](#)

Protein Refseq [NP_004624](#)

MIM [147811](#)

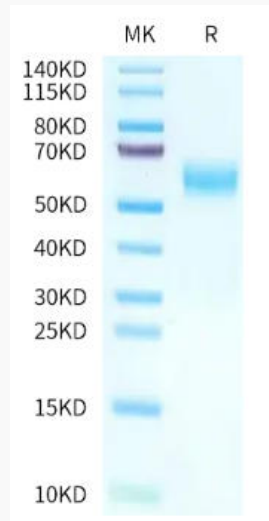
UniProt ID [P27930](#)

 Tel: 1-631-559-9269 1-516-512-3133

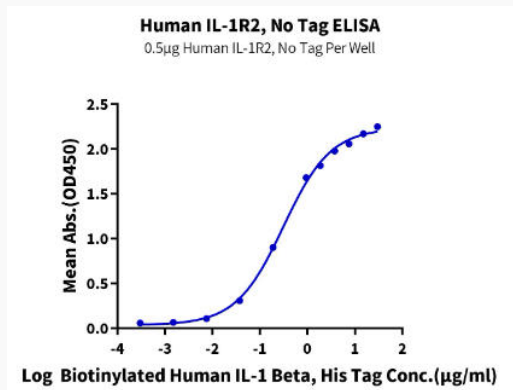
 Email: info@creative-biomart.com  Fax: 1-631-938-8127

 45-1 Ramsey Road, Shirley, NY 11967, USA

Bis-Tris PAGE



ELISA Data



 Tel: 1-631-559-9269 1-516-512-3133

 Email: info@creative-biomart.com  Fax: 1-631-938-8127

 45-1 Ramsey Road, Shirley, NY 11967, USA