

# Recombinant Human interleukin 1 receptor, type II Protein, His tagged

**Cat. No.** IL1R2-112H    **Lot. No.** (See product label)

## SPECIFICATION

<b>Product Overview</b>	Recombinant human IL-1 RII protein (P27930) (Phe 14-Glu 343) with a His tag at the C-terminus was expressed in HEK293.
<b>Species</b>	Human
<b>Source</b>	HEK293
<b>ProteinLength</b>	14-343aa
<b>Description</b>	Non-signaling receptor for IL1A, IL1B and IL1RN. Reduces IL1B activities. Serves as a decoy receptor by competitive binding to IL1B and preventing its binding to IL1R1. Also modulates cellular response through non-signaling association with IL1RAP after binding to IL1B. IL1R2 (membrane and secreted forms) preferentially binds IL1B and poorly IL1A and IL1RN. The secreted IL1R2 recruits secreted IL1RAP with high affinity; this complex formation may be the dominant mechanism for neutralization of IL1B by secreted/soluble receptors.
<b>Tag</b>	C-His
<b>Molecular Mass</b>	39.2 kDa
<b>Endotoxin</b>	Less than 1.0 EU/μg by the LAL method.
<b>Purity</b>	>95% as determined by SDS-PAGE.

 Tel: 1-631-559-9269    1-516-512-3133

 Email: [info@creative-biomart.com](mailto:info@creative-biomart.com)     Fax: 1-631-938-8127

 45-1 Ramsey Road, Shirley, NY 11967, USA

**Storage** Please avoid repeated freeze-thaw cycles. Samples are stable for up to twelve months from date of receipt at -20 to -80 centigrade. It is recommended that aliquot the reconstituted solution to minimize freeze-thaw cycles.

**Storage Buffer** Lyophilized from a 0.2 µm filtered solution of PBS, pH7.4, 5% Trehalose, 5% mannitol.

**Reconstitution** Reconstitute at 250 µg/mL in sterile water.

## GENE INFORMATION

**Gene Name** IL1R2 interleukin 1 receptor, type II [ Homo sapiens (human) ]

**Official Symbol** IL1R2

**Synonyms** IL1R2; interleukin 1 receptor, type II; IL1RB; interleukin-1 receptor type 2; CD121b; CDw121b; IL-1R-2; IL-1RT2; IL-1RT-2; IL-1R-beta; antigen CDw121b; IL-1 type II receptor; interleukin-1 receptor beta; interleukin-1 receptor type II; CD121 antigen-like family member B; type II interleukin-1 receptor, beta; MGC47725;

**Gene ID** 7850

**mRNA Refseq** NM\_004633

**Protein Refseq** NP\_004624

**MIM** 147811

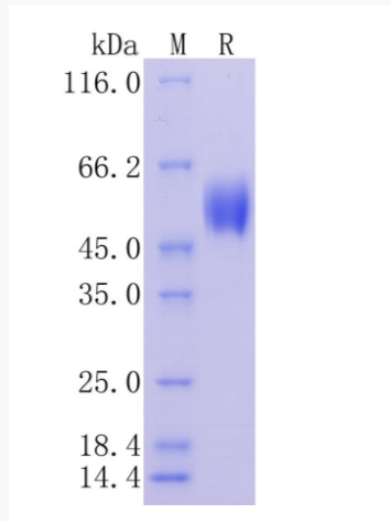
**UniProt ID** P27930

 Tel: 1-631-559-9269 1-516-512-3133

 Email: [info@creative-biomart.com](mailto:info@creative-biomart.com)  Fax: 1-631-938-8127

 45-1 Ramsey Road, Shirley, NY 11967, USA

**Protein on SDS-  
PAGE under  
reducing (R)  
condition.**



 Tel: 1-631-559-9269 1-516-512-3133

 Email: [info@creative-biomart.com](mailto:info@creative-biomart.com)  Fax: 1-631-938-8127

 45-1 Ramsey Road, Shirley, NY 11967, USA