

Active Recombinant Human IL1R2 protein, hFc&His-tagged

Cat. No. IL1R2-1247H Lot. No. (See product label)

SPECIFICATION

Product Overview	Active Recombinant Human IL-1R2/IL-1RT2/CD121b Protein is produced by HEK293 cells expression system. The target protein is expressed with sequence (Met1-Glu343) of human IL1R2 (Accession #NP_004624.1) fused with an Fc, 6xHis tag at the C-terminus.
Species	Human
Source	HEK293
ProteinLength	Met1-Glu343
Form	Lyophilized from a 0.22 µm filtered solution of PBS, pH 7.4.
Bio-activity	Measured by its binding ability in a functional ELISA. Immobilized Recombinant Human IL1RN at 10 µg/mL (100 µL/well) can bind Recombinant Human IL1R2 with a linear range of 7-30 ng/mL.
Molecular Mass	80-95kDa
Endotoxin	< 0.1 EU/µg of the protein by LAL method.
Purity	> 97% by SDS-PAGE.
Storage	Store the lyophilized protein at -20°C to -80 °C for long term. After reconstitution, the protein solution is stable at -20 °C for 3 months, at 2-8 °C for

 Tel: 1-631-559-9269 1-516-512-3133

 Email: info@creative-biomart.com  Fax: 1-631-938-8127

 45-1 Ramsey Road, Shirley, NY 11967, USA

up to 1 week.

Reconstitution Reconstitute to a concentration of 0.1-0.5 mg/mL in sterile distilled water.

GENE INFORMATION

Gene Name [IL1R2 interleukin 1 receptor, type II \[Homo sapiens \]](#)

Official Symbol [IL1R2](#)

Synonyms IL1R2; interleukin 1 receptor, type II; IL1RB; interleukin-1 receptor type 2; CD121b; CDw121b; IL-1R-2; IL-1RT2; IL-1RT-2; IL-1R-beta; antigen CDw121b; IL-1 type II receptor; interleukin-1 receptor beta; interleukin-1 receptor type II; CD121 antigen-like family member B; type II interleukin-1 receptor, beta; MGC47725;

Gene ID [7850](#)

mRNA Refseq [NM_004633](#)

Protein Refseq [NP_004624](#)

MIM [147811](#)

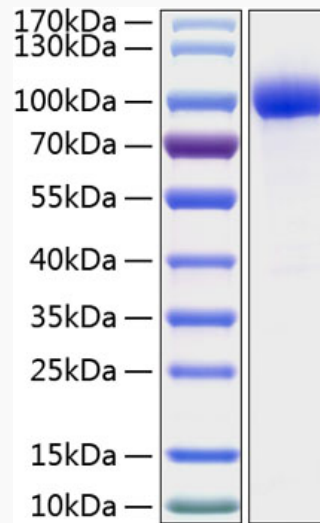
UniProt ID [P27930](#)

 Tel: 1-631-559-9269 1-516-512-3133

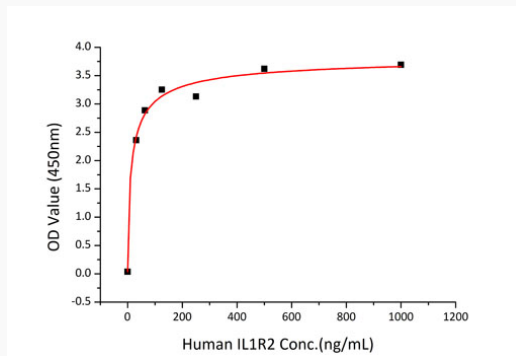
 Email: info@creative-biomart.com  Fax: 1-631-938-8127

 45-1 Ramsey Road, Shirley, NY 11967, USA

SDS-PAGE



Activity



 Tel: 1-631-559-9269 1-516-512-3133

 Email: info@creative-biomart.com  Fax: 1-631-938-8127

 45-1 Ramsey Road, Shirley, NY 11967, USA