

# Recombinant Human IL1R2 Protein, Myc/DDK-tagged, C13 and N15-labeled

**Cat. No.** IL1R2-4406H    **Lot. No.** (See product label)

## SPECIFICATION

<b>Product Overview</b>	IL1R2 MS Standard C13 and N15-labeled recombinant protein (NP_775465) with a C-terminal MYC/DDK tag, was expressed in HEK293 cells.
<b>Species</b>	Human
<b>Source</b>	HEK293
<b>Description</b>	The protein encoded by this gene is a cytokine receptor that belongs to the interleukin 1 receptor family. This protein binds interleukin alpha (IL1A), interleukin beta (IL1B), and interleukin 1 receptor, type I(IL1R1/IL1RA), and acts as a decoy receptor that inhibits the activity of its ligands. Interleukin 4 (IL4) is reported to antagonize the activity of interleukin 1 by inducing the expression and release of this cytokine. This gene and three other genes form a cytokine receptor gene cluster on chromosome 2q12. Alternative splicing results in multiple transcript variants and protein isoforms. Alternative splicing produces both membrane-bound and soluble proteins. A soluble protein is also produced by proteolytic cleavage.
<b>Molecular Mass</b>	43.9 kDa
<b>AA Sequence</b>	MLRLYLVMGVSAFTLQPAAHHTGAARSCRFRGRHYKREFRLEGEPVALRCPQVPY WLWASVSPRINLTWHKNDSTVPGEEETRMWAQD GALWLLPALQEDSGTYVCTT RNASYCDKMSIELRVFENTDAFLPFISYPQILTLSTSGVLVCPDLSEFTRDKTDVKIQ WYKDSLLLDKDNEKFLSVRGTTLLVHDVALEDAGYYRCVLTFHEGQQYNITRSIE

 Tel: 1-631-559-9269    1-516-512-3133

 Email: [info@creative-biomart.com](mailto:info@creative-biomart.com)     Fax: 1-631-938-8127

 45-1 Ramsey Road, Shirley, NY 11967, USA

LRIKKKKEETIPVIISPLKTISASLGSRLTIPCKVFLGTGTPLTTMLWWTANDTHIESAYP  
 GGRVTEGPRQEYSENNENYIEVPLIFDPVTREDLHMDFKCVVHNTLSFQTLRRTVKE  
 ASSTFSWGIVLAPLSLAFLVLGGIWMHRRCKHRTGKADGLTVLWPHHQDFQSYPKT  
 RTRPLEQKLISEEDLAANDILDYKDDDDKV

**Purity** > 80% as determined by SDS-PAGE and Coomassie blue staining

**Stability** Stable for 3 months from receipt of products under proper storage and handling conditions.

**Storage** Store at -80 centigrade. Avoid repeated freeze-thaw cycles.

**Concentration** 50 µg/mL as determined by BCA

**Storage Buffer** 100 mM glycine, 25 mM Tris-HCl, pH 7.3.

## GENE INFORMATION

**Gene Name** IL1R2 interleukin 1 receptor type 2 [ Homo sapiens (human) ]

**Official Symbol** IL1R2

**Synonyms** IL1R2; interleukin 1 receptor, type II; IL1RB; interleukin-1 receptor type 2; CD121b; CDw121b; IL-1R-2; IL-1RT2; IL-1RT-2; IL-1R-beta; antigen CDw121b; IL-1 type II receptor; interleukin-1 receptor beta; interleukin-1 receptor type II; CD121 antigen-like family member B; type II interleukin-1 receptor, beta; MGC47725;

**Gene ID** 7850

**mRNA Refseq** NM\_173343

 Tel: 1-631-559-9269 1-516-512-3133

 Email: [info@creative-biomart.com](mailto:info@creative-biomart.com)  Fax: 1-631-938-8127

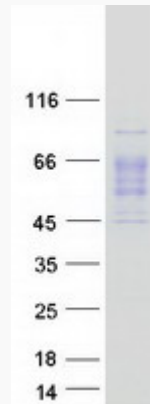
 45-1 Ramsey Road, Shirley, NY 11967, USA

**Protein Refseq**      [NP\\_775465](#)

**MIM**                      [147811](#)

**UniProt ID**              [P27930](#)

**SDS-PAGE**



 Tel: 1-631-559-9269    1-516-512-3133

 Email: [info@creative-biomart.com](mailto:info@creative-biomart.com)     Fax: 1-631-938-8127

 45-1 Ramsey Road, Shirley, NY 11967, USA