

Recombinant Human IL1R2 Protein, Myc/DDK-tagged, C13 and N15-labeled

Cat. No. IL1R2-816H **Lot. No.** (See product label)

SPECIFICATION

Product Overview	IL1R2 MS Standard C13 and N15-labeled recombinant protein (NP_004624) with a C-terminal MYC/DDK tag, was expressed in HEK293 cells.
Species	Human
Source	HEK293
Description	The protein encoded by this gene is a cytokine receptor that belongs to the interleukin 1 receptor family. This protein binds interleukin alpha (IL1A), interleukin beta (IL1B), and interleukin 1 receptor, type I(IL1R1/IL1RA), and acts as a decoy receptor that inhibits the activity of its ligands. Interleukin 4 (IL4) is reported to antagonize the activity of interleukin 1 by inducing the expression and release of this cytokine. This gene and three other genes form a cytokine receptor gene cluster on chromosome 2q12. Alternative splicing results in multiple transcript variants and protein isoforms. Alternative splicing produces both membrane-bound and soluble proteins. A soluble protein is also produced by proteolytic cleavage.
Molecular Mass	45.42 kDa
AA Sequence	MLRLYLVMGVSAFTLQPAAHHTGAARSCRFRGRHYKREFRLEGEPVALRCPQVPY WLWASVSPRINLTWHKNDSARTVPGEEETRMWAQDGALWLLPALQEDSGTYVCTT RNASYCDKMSIELRVFENTDAFLPFISYPQILTLSTSGVLVCPDLSEFTRDKTDVKIQ WYKDSLLLDKDNEKFLSVRGTTLLVHDVALEDAGYYRCVLTFHEGQQYNITRSIE

 Tel: 1-631-559-9269 1-516-512-3133

 Email: info@creative-biomart.com  Fax: 1-631-938-8127

 45-1 Ramsey Road, Shirley, NY 11967, USA

LRIKKKKEETIPVIISPLKTISASLGSRLTIPCKVFLGTGTPLTTMLWWTANDTHIESAYP
 GGRVTEGPRQEYSENNENYIEVPLIFDPVTREDLHMDFKCVVHNTLSFQTLRRTVKE
 ASSTFSWGIVLAPLSLAFLVLGGIWMHRRCKHRTGKADGLTVLWPHHQDFQSYPKT
 RTRPLEQKLISEEDLAANDILDYKDDDDKV

Purity > 80% as determined by SDS-PAGE and Coomassie blue staining

Stability Stable for 3 months from receipt of products under proper storage and handling conditions.

Storage Store at -80 centigrade. Avoid repeated freeze-thaw cycles.

Concentration 50 µg/mL as determined by BCA

Storage Buffer 100 mM glycine, 25 mM Tris-HCl, pH 7.3.

GENE INFORMATION

Gene Name IL1R2 interleukin 1 receptor type 2 [Homo sapiens (human)]

Official Symbol IL1R2

Synonyms IL1R2; interleukin 1 receptor, type II; IL1RB; interleukin-1 receptor type 2; CD121b; CDw121b; IL-1R-2; IL-1RT2; IL-1RT-2; IL-1R-beta; antigen CDw121b; IL-1 type II receptor; interleukin-1 receptor beta; interleukin-1 receptor type II; CD121 antigen-like family member B; type II interleukin-1 receptor, beta; MGC47725;

Gene ID 7850

mRNA Refseq NM_004633

 Tel: 1-631-559-9269 1-516-512-3133

 Email: info@creative-biomart.com  Fax: 1-631-938-8127

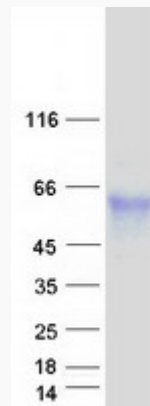
 45-1 Ramsey Road, Shirley, NY 11967, USA

Protein Refseq [NP_004624](#)

MIM [147811](#)

UniProt ID [P27930](#)

SDS-PAGE



 Tel: 1-631-559-9269 1-516-512-3133

 Email: info@creative-biomart.com  Fax: 1-631-938-8127

 45-1 Ramsey Road, Shirley, NY 11967, USA