

Recombinant Human IL1RAP protein, His-Avi-tagged

Cat. No. IL1RAP-093H Lot. No. (See product label)

SPECIFICATION

Product Overview	Recombinant Human IL1RAP protein(Q9NPH3-1)(Ser21-Glu359), fused with C-terminal His and Avi tag, was expressed in HEK293.
Species	Human
Source	HEK293
ProteinLength	Ser21-Glu359
Tag	C-His-Avi
Form	Lyophilized from 0.22µm filtered solution in PBS (pH 7.4). Normally 5% trehalose is added as protectant before lyophilization.
Bio-activity	Immobilized Human IL-1R3, His Tag at 0.5µg/ml (100µl/Well) on the plate. Dose response curve for Anti-IL-1R3 Antibody, hFc Tag with the EC50 of 17.4ng/ml determined by ELISA.
Molecular Mass	The protein has a predicted MW of 42 kDa. Due to glycosylation, the protein migrates to 52-70 kDa based on Tris-Bis PAGE result.
Endotoxin	Less than 1EU per µg by the LAL method.
Purity	> 95% as determined by Tris-Bis PAGE; > 95% as determined by HPLC

 Tel: 1-631-559-9269 1-516-512-3133

 Email: info@creative-biomart.com  Fax: 1-631-938-8127

 45-1 Ramsey Road, Shirley, NY 11967, USA

Storage Reconstituted protein stable at -80°C for 12 months, 4°C for 1 week. Use a manual defrost freezer and avoid repeated freeze-thaw cycles.

Reconstitution Centrifuge tubes before opening. Reconstituting to a concentration more than 100 µg/ml is recommended. Dissolve the lyophilized protein in distilled water.

GENE INFORMATION

Gene Name [IL1RAP interleukin 1 receptor accessory protein \[Homo sapiens \]](#)

Official Symbol [IL1RAP](#)

Synonyms IL1RAP; interleukin 1 receptor accessory protein; interleukin-1 receptor accessory protein; C3orf13; IL 1RAcP; IL1R3; IL-1R3; interleukin-1 receptor 3; IL-1 receptor accessory protein; interleukin-1 receptor accessory protein beta; IL-1RAcP; FLJ37788;

Gene ID [3556](#)

mRNA Refseq [NM_001167928](#)

Protein Refseq [NP_001161400](#)

MIM [602626](#)

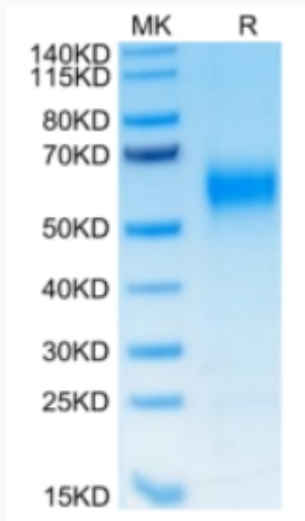
UniProt ID [Q9NPH3](#)

 Tel: 1-631-559-9269 1-516-512-3133

 Email: info@creative-biomart.com  Fax: 1-631-938-8127

 45-1 Ramsey Road, Shirley, NY 11967, USA

Tris-Bis PAGE



ELISA Data

 Tel: 1-631-559-9269 1-516-512-3133

 Email: info@creative-biomart.com  Fax: 1-631-938-8127

 45-1 Ramsey Road, Shirley, NY 11967, USA