

## Active Recombinant Human IL1RAP, Fc-His tagged

Cat. No. IL1RAP-175H Lot. No. (See product label)

### SPECIFICATION

<b>Product Overview</b>	Active Recombinant Human IL1RAP(NP_002173.1)(Met 1-Glu 359) was expressed in Human Cells, fused with the C-terminal polyhistidine-tagged Fc region of human IgG1 at the C-terminus.
<b>Species</b>	Human
<b>Source</b>	Human Cells
<b>ProteinLength</b>	1-359 aa
<b>Form</b>	Lyophilized from sterile PBS, pH 7.4.
<b>Bio-activity</b>	1. Measured by its ability to bind with biotinylated human IL1R2-His in a functional ELISA. 2. Immobilized human IL1R3-Fch at 10 µg/mL (100ul/well) can bind biotinylated human IL1B-His. The EC50 of biotinylated human IL1B-His is 0.11-0.25 µg/mL.
<b>Molecular Mass</b>	The recombinant human IL1R3/Fc is a disulfide-linked homodimer. The reduced monomer consists of 586 amino acids and has a predicted molecular mass of 67.3 kDa. In SDS-PAGE under reducing conditions, the apparent molecular mass of rh IL1R3/Fc monomer is approximately 75-85 kDa due to glycosylation.
<b>Endotoxin</b>	< 1.0 EU per µg of the protein as determined by the LAL method.
<b>Purity</b>	> 95 % as determined by SDS-PAGE

 Tel: 1-631-559-9269 1-516-512-3133

 Email: [info@creative-biomart.com](mailto:info@creative-biomart.com)  Fax: 1-631-938-8127

 45-1 Ramsey Road, Shirley, NY 11967, USA

**Storage** Store it under sterile conditions at -20°C to -80°C upon receiving. Recommend to aliquot the protein into smaller quantities for optimal storage. Avoid repeated freeze-thaw cycles.

**Reconstitution** It is recommended that sterile water be added to the vial to prepare a stock solution of 0.2 ug/ul. Centrifuge the vial at 4°C before opening to recover the entire contents.

## GENE INFORMATION

**Gene Name** [IL1RAP interleukin 1 receptor accessory protein \[ Homo sapiens \]](#)

**Official Symbol** [IL1RAP](#)

**Synonyms** IL1RAP; interleukin 1 receptor accessory protein; interleukin-1 receptor accessory protein; C3orf13; IL 1RAcP; IL1R3; IL-1R3; interleukin-1 receptor 3; IL-1 receptor accessory protein; interleukin-1 receptor accessory protein beta; IL-1RAcP; FLJ37788;

**Gene ID** [3556](#)

**mRNA Refseq** [NM\\_001167928](#)

**Protein Refseq** [NP\\_001161400](#)

**MIM** [602626](#)

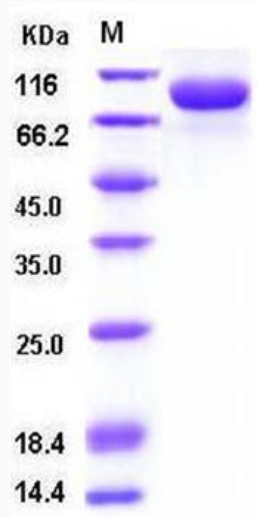
**UniProt ID** [Q9NPH3](#)

 Tel: 1-631-559-9269 1-516-512-3133

 Email: [info@creative-biomart.com](mailto:info@creative-biomart.com)  Fax: 1-631-938-8127

 45-1 Ramsey Road, Shirley, NY 11967, USA

**SDS-PAGE**



 Tel: 1-631-559-9269 1-516-512-3133

 Email: [info@creative-biomart.com](mailto:info@creative-biomart.com)  Fax: 1-631-938-8127

 45-1 Ramsey Road, Shirley, NY 11967, USA