

Active Recombinant Human IL1RAP protein, His-tagged

Cat. No. IL1RAP-2256H Lot. No. (See product label)

SPECIFICATION

Product Overview	Active Recombinant Human IL1RAP protein(Q9NPH3-1)(Ser21-Glu359) is expressed from HEK293 with His tag at the C-terminus.
Species	Human
Source	HEK293
ProteinLength	21-359 aa
Form	Lyophilized from 0.22 µm filtered solution in PBS (pH 7.4).
Bio-activity	Immobilized Human IL-1R3, His Tag at 0.5µg/ml (100µl/well) on the plate. Dose response curve for Anti-IL-1R3 Antibody, hFc Tag with the EC50 of 3.5ng/ml determined by ELISA.
Molecular Mass	The protein has a predicted MW of 40.72 kDa. Due to glycosylation, the protein migrates to 55-70 kDa based on Bis-Tris PAGE result.
Endotoxin	Less than 0.1 EU per µg by the LAL method.
Purity	> 95% as determined by Bis-Tris PAGE > 95% as determined by HPLC
Storage	-20 to -80°C for 12 months as supplied from date of receipt. -80°C for 3 months after reconstitution. Recommend to aliquot the protein into smaller quantities for optimal storage. Please minimize freeze-thaw cycles.

 Tel: 1-631-559-9269 1-516-512-3133

 Email: info@creative-biomart.com  Fax: 1-631-938-8127

 45-1 Ramsey Road, Shirley, NY 11967, USA

Reconstitution Dissolve the lyophilized protein in distilled water.

GENE INFORMATION

Gene Name IL1RAP interleukin 1 receptor accessory protein [Homo sapiens]

Official Symbol IL1RAP

Synonyms IL1RAP; interleukin 1 receptor accessory protein; interleukin-1 receptor accessory protein; C3orf13; IL 1RAcP; IL1R3; IL-1R3; interleukin-1 receptor 3; IL-1 receptor accessory protein; interleukin-1 receptor accessory protein beta; IL-1RAcP; FLJ37788;

Gene ID 3556

mRNA Refseq NM_001167928

Protein Refseq NP_001161400

MIM 602626

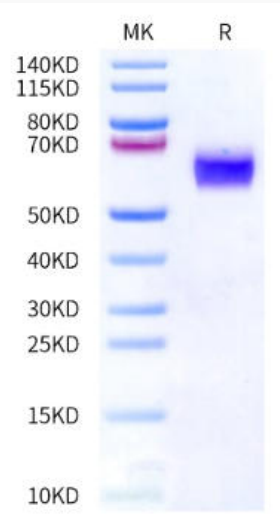
UniProt ID Q9NPH3

 Tel: 1-631-559-9269 1-516-512-3133

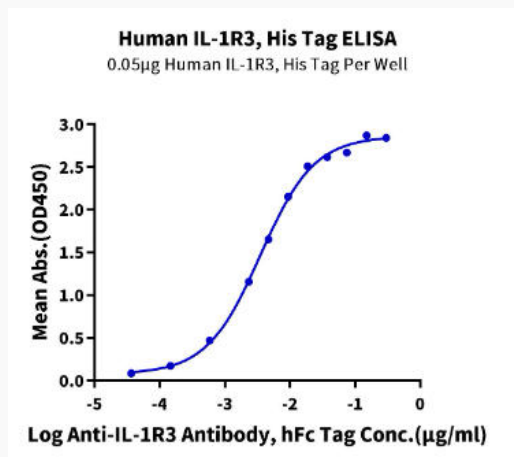
 Email: info@creative-biomart.com  Fax: 1-631-938-8127

 45-1 Ramsey Road, Shirley, NY 11967, USA

Bis-Tris PAGE



ELISA Data



 Tel: 1-631-559-9269 1-516-512-3133

 Email: info@creative-biomart.com  Fax: 1-631-938-8127

 45-1 Ramsey Road, Shirley, NY 11967, USA