

Recombinant Human IL1RAP protein, hFc-tagged

Cat. No. IL1RAP-627H Lot. No. (See product label)

SPECIFICATION

Product Overview	Recombinant Human IL1RAP protein(Ser21-Glu359)(Q9NPH3-1) is expressed from HEK293 with hFc tag at the C-Terminus.
Species	Human
Source	HEK293
ProteinLength	Ser21-Glu359
Form	Lyophilized from 0.22um filtered solution in PBS (pH 7.4). Normally 8% trehalose is added as protectant before lyophilization.
Bio-activity	Immobilized Human IL-1R3, hFc Tag at 0.5ug/ml (100ul/well) on the plate. Dose response curve for Biotinylated Anti-IL-1R3 Antibody, hFc Tag with the EC50 of 19.2ng/ml determined by ELISA.
Molecular Mass	The protein has a predicted MW of 65.8 kDa. Due to glycosylation, the protein migrates to 75-85 kDa based on Tris-Bis PAGE result.
Endotoxin	Less than 1EU per ug by the LAL method.
Purity	> 95% as determined by Tris-Bis PAGE > 95% as determined by HPLC
Storage	-20 to -80°C for 12 months as supplied from date of receipt.

 Tel: 1-631-559-9269 1-516-512-3133

 Email: info@creative-biomart.com  Fax: 1-631-938-8127

 45-1 Ramsey Road, Shirley, NY 11967, USA

-80°C for 3-6 months after reconstitution.
 2-8°C for 2-7 days after reconstitution.
 Recommend to aliquot the protein into smaller quantities for optimal storage. Please minimize freeze-thaw cycles.

Reconstitution

Centrifuge the tube before opening. Reconstituting to a concentration more than 100 ug/ml is recommended. Dissolve the lyophilized protein in distilled water.

GENE INFORMATION

Gene Name

IL1RAP interleukin 1 receptor accessory protein [Homo sapiens]

Official Symbol

IL1RAP

Synonyms

IL1RAP; interleukin 1 receptor accessory protein; interleukin-1 receptor accessory protein; C3orf13; IL 1RAcP; IL1R3; IL-1R3; interleukin-1 receptor 3; IL-1 receptor accessory protein; interleukin-1 receptor accessory protein beta; IL-1RAcP; FLJ37788;

Gene ID

3556

mRNA Refseq

NM_001167928

Protein Refseq

NP_001161400

MIM

602626

UniProt ID

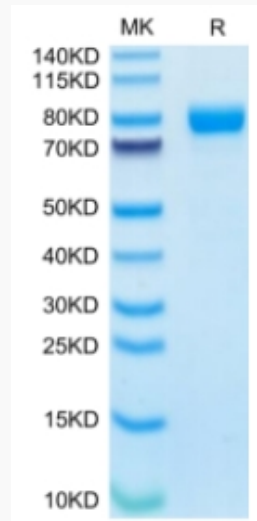
Q9NPH3

 Tel: 1-631-559-9269 1-516-512-3133

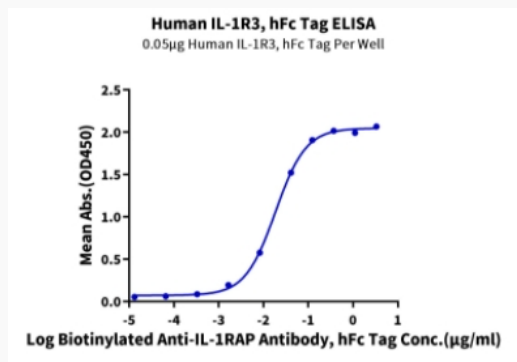
 Email: info@creative-biomart.com  Fax: 1-631-938-8127

 45-1 Ramsey Road, Shirley, NY 11967, USA

Tris-Bis PAGE



ELISA Data



 Tel: 1-631-559-9269 1-516-512-3133

 Email: info@creative-biomart.com  Fax: 1-631-938-8127

 45-1 Ramsey Road, Shirley, NY 11967, USA