

## Recombinant Human IL1RAPL1 protein, hFc-tagged

**Cat. No.** IL1RAPL1-776H    **Lot. No.** (See product label)

### SPECIFICATION

<b>Product Overview</b>	Recombinant Human IL1RAPL1 protein(NP_055086.1)(Met 1-Leu 354) was expressed in HEK293, fused with the Fc region of human IgG1 at the C-terminus.
<b>Species</b>	Human
<b>Source</b>	HEK293
<b>ProteinLength</b>	1-354 aa
<b>Form</b>	Lyophilized from sterile PBS, pH 7.4.
<b>Molecular Mass</b>	The recombinant human IL1R8/Fc is a disulfide-linked homodimer. The reduced monomer consists of 574 amino acids and has a predicted molecular mass of 65 kDa. As a result of glycosylation, the rh IL1R8/Fc monomer migrates with an apparent molecular mass of 80-85 kDa in SDS-PAGE under reducing conditions.
<b>Endotoxin</b>	< 1.0 EU per µg of the protein as determined by the LAL method.
<b>Purity</b>	> 95 % as determined by SDS-PAGE
<b>Storage</b>	Store it under sterile conditions at -20°C to -80°C upon receiving. Recommend to aliquot the protein into smaller quantities for optimal storage. Avoid repeated freeze-thaw cycles.
<b>Reconstitution</b>	It is recommended that sterile water be added to the vial to prepare a stock solution of

 Tel: 1-631-559-9269    1-516-512-3133

 Email: [info@creative-biomart.com](mailto:info@creative-biomart.com)     Fax: 1-631-938-8127

 45-1 Ramsey Road, Shirley, NY 11967, USA

0.2 ug/ul. Centrifuge the vial at 4°C before opening to recover the entire contents.

## GENE INFORMATION

**Gene Name** IL1RAPL1 interleukin 1 receptor accessory protein-like 1 [ Homo sapiens ]

**Official Symbol** IL1RAPL1

**Synonyms**

IL1RAPL1; interleukin 1 receptor accessory protein-like 1; IL1RAPL, mental retardation, X linked 10 , mental retardation, X linked 21 , mental retardation, X linked 34 , MRX10, MRX21, MRX34; interleukin-1 receptor accessory protein-like 1; IL1R8; OPHN4; TIGIRR 2; IL1RAPL-1; IL-1RAPL-1; IL-1-RAPL-1; oligophrenin-4; interleukin 1 receptor-8; mental retardation, X-linked 10; X-linked interleukin-1 receptor accessory protein-like 1; three immunoglobulin domain-containing IL-1 receptor-related 2; MRX10; MRX21; MRX34; IL1RAPL; TIGIRR-2;

**Gene ID** 11141

**mRNA Refseq** NM\_014271

**Protein Refseq** NP\_055086

**MIM** 300206

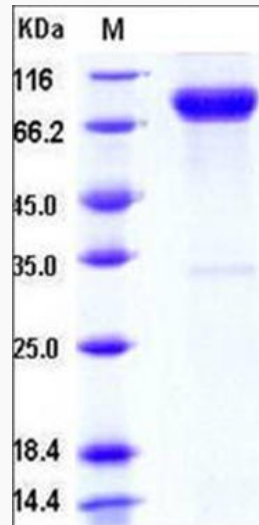
**UniProt ID** Q9NZN1

 Tel: 1-631-559-9269 1-516-512-3133

 Email: [info@creative-biomart.com](mailto:info@creative-biomart.com)  Fax: 1-631-938-8127

 45-1 Ramsey Road, Shirley, NY 11967, USA

SDS-PAGE



 Tel: 1-631-559-9269 1-516-512-3133

 Email: [info@creative-biomart.com](mailto:info@creative-biomart.com)  Fax: 1-631-938-8127

 45-1 Ramsey Road, Shirley, NY 11967, USA