

Recombinant Human IL1RAPL1 protein, His-tagged

Cat. No. IL1RAPL1-777H Lot. No. (See product label)

SPECIFICATION

Product Overview	Recombinant Human IL1RAPL1 protein(NP_055086.1)(Met 1-Leu 354) was expressed in HEK293 with a C-terminal polyhistidine tag.
Species	Human
Source	HEK293
ProteinLength	1-354 aa
Form	Lyophilized from sterile PBS, pH 7.4.
Molecular Mass	The recombinant human IL1R8 consists of 347 amino acids and has a predicted molecular mass of 40 kDa. As a result of glycosylation, the apparent molecular mass of rh IL1R8 is approximately 50-55 kDa in SDS-PAGE under reducing conditions.
Endotoxin	< 1.0 EU per µg of the protein as determined by the LAL method.
Purity	> 95 % as determined by SDS-PAGE
Storage	Store it under sterile conditions at -20°C to -80°C upon receiving. Recommend to aliquot the protein into smaller quantities for optimal storage. Avoid repeated freeze-thaw cycles.
Reconstitution	It is recommended that sterile water be added to the vial to prepare a stock solution of 0.2 ug/ul. Centrifuge the vial at 4°C before opening to recover the entire contents.

 Tel: 1-631-559-9269 1-516-512-3133

 Email: info@creative-biomart.com  Fax: 1-631-938-8127

 45-1 Ramsey Road, Shirley, NY 11967, USA

GENE INFORMATION

Gene Name IL1RAPL1 interleukin 1 receptor accessory protein-like 1 [Homo sapiens]

Official Symbol IL1RAPL1

Synonyms IL1RAPL1; interleukin 1 receptor accessory protein-like 1; IL1RAPL, mental retardation, X linked 10 , mental retardation, X linked 21 , mental retardation, X linked 34 , MRX10, MRX21, MRX34; interleukin-1 receptor accessory protein-like 1; IL1R8; OPHN4; TIGIRR 2; IL1RAPL-1; IL-1RAPL-1; IL-1-RAPL-1; oligophrenin-4; interleukin 1 receptor-8; mental retardation, X-linked 10; X-linked interleukin-1 receptor accessory protein-like 1; three immunoglobulin domain-containing IL-1 receptor-related 2; MRX10; MRX21; MRX34; IL1RAPL; TIGIRR-2;

Gene ID 11141

mRNA Refseq NM_014271

Protein Refseq NP_055086

MIM 300206

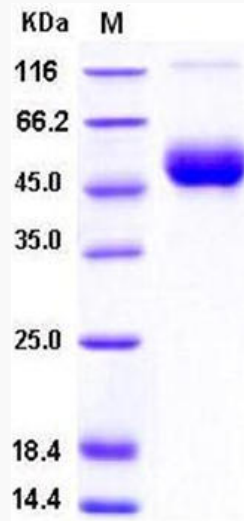
UniProt ID Q9NZN1

 Tel: 1-631-559-9269 1-516-512-3133

 Email: info@creative-biomart.com  Fax: 1-631-938-8127

 45-1 Ramsey Road, Shirley, NY 11967, USA

SDS-PAGE



 Tel: 1-631-559-9269 1-516-512-3133

 Email: info@creative-biomart.com  Fax: 1-631-938-8127

 45-1 Ramsey Road, Shirley, NY 11967, USA