

Recombinant Human IL1RAPL1 protein, His-tagged

Cat. No. IL1RAPL1-975H Lot. No. (See product label)

SPECIFICATION

Product Overview	Recombinant Human IL1RAPL1 protein(NP_055086)(552-696 aa), fused to His tag, was expressed in E. coli.
Species	Human
Source	E.coli
ProteinLength	552-696 aa
Form	The purified protein was Lyophilized from sterile PBS (58mM Na ₂ HPO ₄ , 17mM NaH ₂ PO ₄ , 68mM NaCl, pH7.). 5 % trehalose and 5 % mannitol are added as protectants before lyophilization.
AA Sequence	WKRLQYEMPFKRIEPI THEQALDVSEQGPFGELQTVSAISMAAATSTALATAHPDLR STFHNTYHSQMRQKHYYRSYEYDVPPTGTLPLTSIGNQHTYCNIPMTLINGQRPQTK SSREQNPDEAHTNSAILPLLPRETSISSVIW
Purity	90%, by SDS-PAGE with Coomassie Brilliant Blue staining.
Storage	Short-term storage: Store at 2-8°C for (1-2 weeks). Long-term storage: Aliquot and store at -20°C to -80°C for up to 3 months, buffer containing 50% glycerol is recommended for reconstitution. Avoid repeat freeze-thaw cycles.
Reconstitution	Reconstitute at 0.25 g/μl in 200 μl sterile water for short-term storage.

 Tel: 1-631-559-9269 1-516-512-3133

 Email: info@creative-biomart.com  Fax: 1-631-938-8127

 45-1 Ramsey Road, Shirley, NY 11967, USA

Reconstitution with 200 µl 50% glycerol solution is recommended for longer term storage (see Stability and Storage for more details).

If a different concentration is needed for your purposes please adjust the reconstitution volume as required (please note: the ion concentration of the final solution will vary according to the volume used).

Note: Centrifuge vial before opening. When reconstituting, gently pipet and wash down the sides of the vial to ensure full recovery of the protein into solution.

GENE INFORMATION

Gene Name [IL1RAPL1 interleukin 1 receptor accessory protein-like 1 \[Homo sapiens \]](#)

Official Symbol [IL1RAPL1](#)

Synonyms

IL1RAPL1; interleukin 1 receptor accessory protein-like 1; IL1RAPL, mental retardation, X linked 10 , mental retardation, X linked 21 , mental retardation, X linked 34 , MRX10, MRX21, MRX34; interleukin-1 receptor accessory protein-like 1; IL1R8; OPHN4; TIGIRR 2; IL1RAPL-1; IL-1RAPL-1; IL-1-RAPL-1; oligophrenin-4; interleukin 1 receptor-8; mental retardation, X-linked 10; X-linked interleukin-1 receptor accessory protein-like 1; three immunoglobulin domain-containing IL-1 receptor-related 2; MRX10; MRX21; MRX34; IL1RAPL; TIGIRR-2;

Gene ID [11141](#)

mRNA Refseq [NM_014271](#)

Protein Refseq [NP_055086](#)

MIM [300206](#)

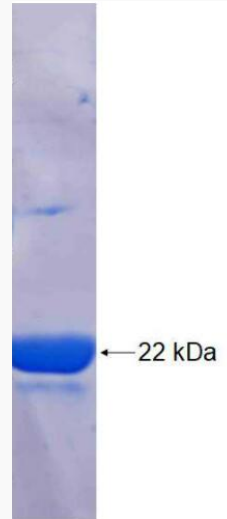
UniProt ID [Q9NZN1](#)

 Tel: 1-631-559-9269 1-516-512-3133

 Email: info@creative-biomart.com  Fax: 1-631-938-8127

 45-1 Ramsey Road, Shirley, NY 11967, USA

SDS-PAGE



 Tel: 1-631-559-9269 1-516-512-3133

 Email: info@creative-biomart.com  Fax: 1-631-938-8127

 45-1 Ramsey Road, Shirley, NY 11967, USA