

## Recombinant Human IL1RAPL2 protein, His & T7-tagged

Cat. No. IL1RAPL2-1574H Lot. No. (See product label)

### SPECIFICATION

<b>Product Overview</b>	Recombinant Human IL1RAPL2 aa. (Ser161~Thr330 (Accession # Q9NP60)) fused with N-terminal His & T7 tag was produced in E. coli cells.
<b>Species</b>	Human
<b>Source</b>	E.coli
<b>ProteinLength</b>	Ser161~Thr330
<b>Description</b>	The protein encoded by this gene is a member of the interleukin 1 receptor family. This protein is similar to the interleukin 1 accessory proteins, and is most closely related to interleukin 1 receptor accessory protein-like 1 (IL1RAPL1). This gene and IL1RAPL1 are located at a region on chromosome X that is associated with X-linked non-syndromic cognitive disability.
<b>Form</b>	Freeze-dried powder
<b>Molecular Mass</b>	27kDa as determined by SDS-PAGE reducing conditions.
<b>Endotoxin</b>	<1.0EU per 1ug (determined by the LAL method)
<b>Purity</b>	>95%
<b>Applications</b>	SDS-PAGE; WB; ELISA; IP.

 Tel: 1-631-559-9269 1-516-512-3133

 Email: [info@creative-biomart.com](mailto:info@creative-biomart.com)  Fax: 1-631-938-8127

 45-1 Ramsey Road, Shirley, NY 11967, USA

<b>Stability</b>	The thermal stability is described by the loss rate. The loss rate was determined by accelerated thermal degradation test, that is, incubate the protein at 37°C for 48h, and no obvious degradation and precipitation were observed. The loss rate is less than 5% within the expiration date under appropriate storage condition.
<b>Storage</b>	Avoid repeated freeze/thaw cycles. Store at 2-8°C for one month. Aliquot and store at -80°C for 12 months.
<b>Storage buffer</b>	Supplied as lyophilized form in PBS, pH7.4, containing 5% trehalose, 0.01% sarcosyl.
<b>Reconstitution</b>	Reconstitute in sterile PBS, pH7.2-pH7.4.
<b>Isoelectric Point</b>	4.9

## GENE INFORMATION

<b>Gene Name</b>	IL1RAPL2 interleukin 1 receptor accessory protein like 2 [ Homo sapiens (human) ]
<b>Official Symbol</b>	IL1RAPL2
<b>Synonyms</b>	IL1RAPL2; interleukin 1 receptor accessory protein like 2; IL1R9; IL-1R9; TIGIRR-1; IL1RAPL-2; X-linked interleukin-1 receptor accessory protein-like 2; IL-1 receptor accessory protein-like 2; IL-1R-9; IL1RAPL-2-related protein; interleukin 1 receptor 9; three immunoglobulin domain-containing IL-1 receptor-related 1
<b>Gene ID</b>	26280
<b>mRNA Refseq</b>	NM_017416.1
<b>Protein Refseq</b>	NP_059112.1

 Tel: 1-631-559-9269 1-516-512-3133

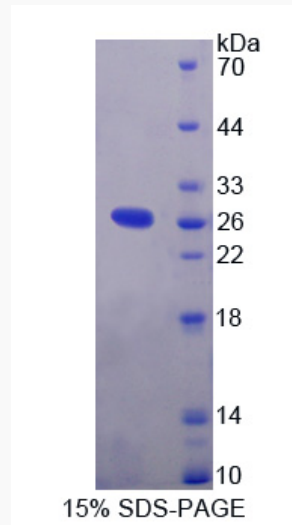
 Email: [info@creative-biomart.com](mailto:info@creative-biomart.com)  Fax: 1-631-938-8127

 45-1 Ramsey Road, Shirley, NY 11967, USA

UniProt ID

Q9NP60

SDS-PAGE



 Tel: 1-631-559-9269 1-516-512-3133

 Email: [info@creative-biomart.com](mailto:info@creative-biomart.com)  Fax: 1-631-938-8127

 45-1 Ramsey Road, Shirley, NY 11967, USA