

Recombinant Human IL1RAPL2 protein, His-tagged

Cat. No. IL1RAPL2-3147H Lot. No. (See product label)

SPECIFICATION

Product Overview	Recombinant Human IL1RAPL2 protein(Met 1-Glu 356)(NP_059112.1) was expressed in HEK293, with a C-terminal polyhistidine tag.
Species	Human
Source	HEK293
ProteinLength	1-356 aa
Form	Lyophilized from sterile PBS, pH 7.4.
Molecular Mass	The secreted recombinant human IL1R9 consists of 351 amino acids and has a predicted molecular mass of 40.7 kDa. In SDS-PAGE, the apparent molecular mass of rh IL1R9 is approximately 50-55 kDa due to glycosylation.
Endotoxin	< 1.0 EU per µg of the protein as determined by the LAL method.
Purity	> 98 % as determined by SDS-PAGE
Storage	Store it under sterile conditions at -20°C to -80°C upon receiving. Recommend to aliquot the protein into smaller quantities for optimal storage. Avoid repeated freeze-thaw cycles.
Reconstitution	It is recommended that sterile water be added to the vial to prepare a stock solution of 0.2 ug/ul. Centrifuge the vial at 4°C before opening to recover the entire contents.

 Tel: 1-631-559-9269 1-516-512-3133

 Email: info@creative-biomart.com  Fax: 1-631-938-8127

 45-1 Ramsey Road, Shirley, NY 11967, USA

GENE INFORMATION

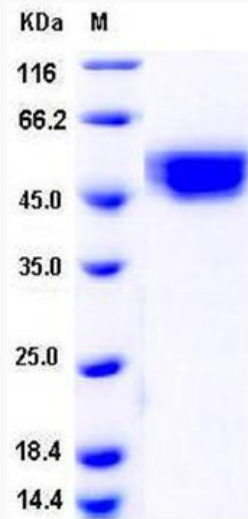
Gene Name	IL1RAPL2 interleukin 1 receptor accessory protein-like 2 [Homo sapiens]
Official Symbol	IL1RAPL2
Synonyms	IL1RAPL2; interleukin 1 receptor accessory protein-like 2; X-linked interleukin-1 receptor accessory protein-like 2; IL 1R9; IL1R9; IL1RAPL 2; TIGIRR 1; IL-1R-9; IL-1RAPL-2; IL-1-RAPL-2; interleukin 1 receptor 9; interleukin-1 receptor 9; IL1RAPL-2-related protein; IL-1 receptor accessory protein-like 2; three immunoglobulin domain-containing IL-1 receptor-related 1; IL-1R9; TIGIRR-1; IL1RAPL-2;
Gene ID	26280
mRNA Refseq	NM_017416
Protein Refseq	NP_059112
MIM	300277
UniProt ID	Q9NP60

 Tel: 1-631-559-9269 1-516-512-3133

 Email: info@creative-biomart.com  Fax: 1-631-938-8127

 45-1 Ramsey Road, Shirley, NY 11967, USA

SDS-PAGE



 Tel: 1-631-559-9269 1-516-512-3133

 Email: info@creative-biomart.com  Fax: 1-631-938-8127

 45-1 Ramsey Road, Shirley, NY 11967, USA