

Recombinant Human IL1RAPL2 protein, hFc-tagged

Cat. No. IL1RAPL2-778H Lot. No. (See product label)

SPECIFICATION

Product Overview Recombinant Human IL1RAPL2 protein(Met 1-Glu 356)(NP_059112.1) precursor was expressed in HEK293 with the fused Fc region of human IgG1 at the C-terminus.

Species Human

Source HEK293

ProteinLength 1-356 aa

Form Lyophilized from sterile 100mM Glycine, 10mM NaCl, 50mM Tris, pH 7.5.

Molecular Mass The recombinant human IL1R9/Fc is a disulfide-linked homodimeric protein generated by proteolytic removal of the signal peptide. The reduced monomer consists of 578 amino acids and has a predicted molecular mass of 66 kDa. In SDS-PAGE, the apparent molecular mass of rhIL1R9/Fc monomer is approximately 80-85 kDa due to glycosylation.

Endotoxin < 1.0 EU per µg of the protein as determined by the LAL method.

Purity > 95 % as determined by SDS-PAGE

Storage Store it under sterile conditions at -20°C to -80°C upon receiving. Recommend to aliquot the protein into smaller quantities for optimal storage. Avoid repeated freeze-thaw cycles.

 Tel: 1-631-559-9269 1-516-512-3133

 Email: info@creative-biomart.com  Fax: 1-631-938-8127

 45-1 Ramsey Road, Shirley, NY 11967, USA

Reconstitution It is recommended that sterile water be added to the vial to prepare a stock solution of 0.2 ug/ul. Centrifuge the vial at 4°C before opening to recover the entire contents.

GENE INFORMATION

Gene Name IL1RAPL2 interleukin 1 receptor accessory protein-like 2 [Homo sapiens]

Official Symbol IL1RAPL2

Synonyms IL1RAPL2; interleukin 1 receptor accessory protein-like 2; X-linked interleukin-1 receptor accessory protein-like 2; IL 1R9; IL1R9; IL1RAPL 2; TIGIRR 1; IL-1R-9; IL-1RAPL-2; IL-1-RAPL-2; interleukin 1 receptor 9; interleukin-1 receptor 9; IL1RAPL-2-related protein; IL-1 receptor accessory protein-like 2; three immunoglobulin domain-containing IL-1 receptor-related 1; IL-1R9; TIGIRR-1; IL1RAPL-2;

Gene ID 26280

mRNA Refseq NM_017416

Protein Refseq NP_059112

MIM 300277

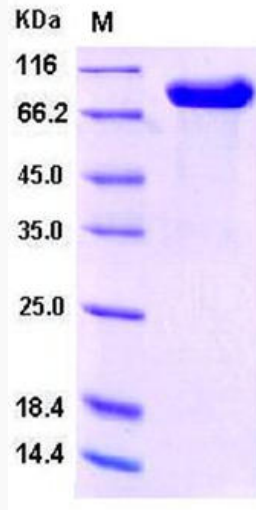
UniProt ID Q9NP60

 Tel: 1-631-559-9269 1-516-512-3133

 Email: info@creative-biomart.com  Fax: 1-631-938-8127

 45-1 Ramsey Road, Shirley, NY 11967, USA

SDS-PAGE



 Tel: 1-631-559-9269 1-516-512-3133

 Email: info@creative-biomart.com  Fax: 1-631-938-8127

 45-1 Ramsey Road, Shirley, NY 11967, USA